



Single Copy \$1.00  
Sections - 3  
Pages - 20

# The Wayne Herald

Thursday, December 8, 2016 141st Year - No. 10

Daily updates, video and more on the Web at [www.mywaynenews.com](http://www.mywaynenews.com)

## WCS Foundation focuses on students

By Calyn Dunklau  
calyn@wayneherald.com

Every year members of the community, area businesses and alumni donate money to the Wayne Community Schools Foundation and every year, that money goes toward important purchases that the school's general fund doesn't or wouldn't cover.

"The district is funded by tax dollars — some federal funds and very little state funding comes to us. We operate our general fund that way. Anything the Foundation provides, we don't have to pull from the general fund," school superintendent Mark Lenihan said.

Important purchases like the new choral robes that cost thousands of dollars which are set to arrive this month. While the current robes aren't completely unusable, they all have seen better days and haven't been updated since they were purchased upwards of 50 years ago.

There are only so many stains that will come out and so many tears that can be fixed before you have to scrap it and start over. Which was the case in the band uniforms just a few years back. This time around the school and the Foundation are roughly splitting the cost of the new robes.

It's purchases like that which make the foundation, WEB and the booster clubs a necessary part of operating for the schools.

"The school's general fund is kind of restricted as far as what we can tax for and spend," said Lenihan. "We don't really have any room to grow the general fund dollars."

Without raising the tax levy, the school's hands are pretty much tied. No one wants a higher tax burden, but the budget can only stretch so far, so the school district relies heavily on the supplemental funding provided by the Foundation.

"It allows us to do things outside of our general fund that normally

wouldn't be able to be done," Lenihan said.

Since Lindsay McLaughlin started with the Foundation in 2012, it's been a relief for many who donate to know that someone is on staff to direct donations, rather than just a volunteer board.

McLaughlin is the only staffed person for the Foundation and she also works at the school, which gives her a unique insight. She's right there to see the wants and needs of the various classrooms, teachers and programs at Wayne.

"We have several different line items and focuses like fine arts, technology, athletics, scholarships and an unrestricted or special requests focus," McLaughlin said. "We work directly with Mr. Lenihan to gauge what needs, goals and wants of the school district has."

McLaughlin also stressed that the Foundation's mission was to aid in funding things that directly impact the students.

See Foundation, Page 4A



(Photo by Clara Osten)

City Attorney Amy Miller (far left) swears in council members Nick Muir (from left), Cale Giese, Jon Haase and Jennifer Sievers. Jill Broderson was re-elected to serve as Council President.

## Council members sworn in to office

By Clara Osten  
clara@wayneherald.com

Nick Muir, Cale Giese, Jon Haase and Jennifer Sievers were sworn in as members of the Wayne City Council in their respective wards during Tuesday's meeting of the Wayne City Council.

Conducting the ceremony was Amy Miller, Wayne City Attorney.

All four were re-elected in the November General election.

Jill Broderson was re-elected to serve as Council President during the meeting.

Several items on the agenda dealt with the Wayne Aquatic Center.

A change order resulting in a decrease of \$37,997.34 was approved to Christiansen Construction, LLC.

The majority of that amount represents 60 days worth of liquidated damages because the project was not completed by the date specified in the contract.

Roger Protzman with JEO Consulting Group told the council that the city had met with the contractor and discussed the reasons for the delay.

As a result of the discussion, a compromise was reached on the actual number of days in which damages were sought.

A final payment of \$27,550.92 was approved to Christiansen Construction for the project.

Protzman told the council that the entire construction portion of the project was \$2,612,038.98, which was under the original budget.

In connection with the construction of the aquatic center, the council approved an amended agreement with JE Consulting Group for additional services provided during the time the facility was being constructed. An additional \$14,071.50 was paid to the firm because of the extra time the project took to complete.

Following a public hearing council members approved a redevelopment plan for Sebade Housing LLC for an area south of the former Bomgaars building along Sixth Street.

The council action allows the project to move forward with TIF financing.

A second public hearing during the meeting involved a Planning Commission recommendation on the "Community Schools Addition to the City of Wayne Final Plat."

The resolution passed following the public hearing will result in a 'land swap' with Wayne Community Schools. The city will then own the property on which the Aquatic Center's filter building is located and the school will own the area where the long jump pit is located.

Council members approved a bid of \$51,575 for a 2017 Ford Super Cab Four-Wheel Drive pickup for the Wayne Electric Distribution Department.

During Tuesday's meeting, council members approved the appointment of Scott Meisenbach to the Recreation-Leisure Services Commission and re-appointed Nick Muir and Corby Schweers to the Community Redevelopment Authority.

The council will hold its last meeting of 2016 on Tuesday, Dec. 20 at 5:30 p.m. in council chambers.

## FRESH MEATS, AGED WINES



(Photos by Calyn Dunklau)

A customer orders cuts of meat at T&H Meat Co. and Fine Spirits in Laurel. The store fills a unique role in the small town, allowing for big city selection with hometown service.

## T&H Meat Co. and Fine Spirits fills niche in Laurel while working with other businesses

By Calyn Dunklau  
calyn@wayneherald.com

Something different -- and a little out of the ordinary -- can be expected the moment the doors open to T&H Meat Co. and Fine Spirits in Laurel.

If you aren't impressed by the hundreds of spirits or 60+ types of wine carried there, the 2" thick pork chops should do the trick. Or maybe you're more of a T-Bone steak kind of person? Not a problem at T&H.

Staffed with a full time meat processor, T&H offers dozens of popular cuts of meat each day, but that doesn't mean what you see is what you get.

"If you don't see it in there, just ask," owner Scott Taylor said of the display case. "Our guy Ron will cut it for you right here."

Everything cut of beef offered by T&H Meat Co. is certified Angus beef and they also offer Heritage Berkshire Pork, a type of pork that is similar to what a person could get in the "old-school days" Taylor said, where the pork is actually marbled with fat, making it a juicier, more flavorful meat.

"We carry the highest quality with everything we have and a lot of it comes right out of Omaha which means it's all beef raised right in Northeast Nebraska," Taylor said. "The pork that we get is all raised right around here."

T&H doesn't purchase full hogs or sides of beef, but quarters and finishes processing the meat into cuts themselves, ensuring the



freshest, highest quality cuts are available for purchasing.

"It's a major bonus to have when the farmers know that their grain is going to feed this livestock, that they're raising this in Nebraska and that we're selling it right here," said Taylor.

With people being more mindful of what they

put in their bodies and where that comes from, to be able to tout the small circle T&H Meat Co. has with their products is something not many can do.

"That's something we take pride in. People want to have good quality meat."

But what happens if a cut doesn't get picked in a day or two?

It's not wasted, that's for certain.

Where a grocery store wouldn't normally carry specialized cuts like this due to the possibility of it not selling, T&H doesn't have that problem.

Between Taylor's other businesses Knuckleheadz Bar, the Claramont Steak and Chop-house and Smokin' T's Catering, the meat is able to be used, rather than tossed.

"The businesses really work hand-in-hand," Taylor said. "But it benefits the people too. If people ever go, 'Gee, I wonder what those steaks are like,' well go down to the steakhouse to see."

And after you've finished your steak at the Claramont you can make your way back to T&H to pick up the steaks you want along with the wine you tried with your meal.

Having a selection of over 60 wines, including several Nebraska wines, the Fine Spirits side of T&H doesn't disappoint.

Having coolers with dozens of options, as well as a beer cave that keeps libations ice-cold, there is something for everyone.

And nothing pairs with with a great steak quite like a cold drink.







(Photos by Clara Osten)

Dr. Melissa Heithold from the Wayne Veterinary Clinic (above) spoke of the Veterinary Feed Directive that will go into effect Jan. 1, 2017 during last week's Ag seminar. (below) Marty Marx with the Natural Resources Conservation Service demonstrates the difference in soils from tilled and no-till field. (bottom) Hilary Maricle with the American Farm Bureau Federation Promotion and Education committee talked about her passions in regard to her family's farming operation.

## Ag seminar serves to share information, show appreciation

By Clara Osten  
clara@wayneherald.com

How to maintain soil health, changes in feed directives and how to positively tell the story of your farm were featured topics at the ninth annual Agriculture Outlook Seminar and Appreciation Luncheon on Dec. 2.

Hosted by the Ag Task Force and Wayne Area Economic Development, the event also was host to the weekly Chamber Coffee and included door prizes and lunch, catered by Vel's Bakery.

In addition to a number of area ag producers in attendance, several students from Wayne High School were able to be a part of the audience.

Doug Temme, a member of the Ag Task Force, served as emcee for the morning.

Speakers included Marty Marx with the Natural Resources Conservation Service. He told his audience of the benefits of cover crops, seeding waterways and no-till farming.

He also demonstrated the impact of tillage on soil's ability to handle water run-off and presented suggestions on what the future may hold in regard to soil health.

Following the morning session, the weekly Chamber Coffee was held with door prizes awarded to many of those in attendance.

Dr. Melissa Heithold with the Wayne Veterinary Clinic spoke of the upcoming implementation of the Veterinary Feed Directive (VFD) and what it will mean to area animal producers. She noted that a number of antibiotic products used in animal production will require a veterinarian directive before they can be used.

"The goal of these changes is to promote judicious use of antibiotics, protect public health and help limit the development of antimicrobial resistance," Dr. Heithold said.

The final speaker of the seminar was Hilary Maricle who serves with the American Farm Bureau Federation Promotion and Education committee who spoke of "Who is Telling Your Farm Food Story?"



Maricle and her family are sixth generation farmers near Albion, who raise cattle, hogs, sheep, corn and soybeans.

Maricle told her audience that it is their responsibility to "talk about the areas you know and refer questions to the experts in areas that you don't know about."

Her three words of advice to producers when encountering those not familiar with agriculture were "Ask, Listen and Share."

Members of the Ag Task Force include Bill Claybaugh (chair), Alan Finn, Ron Gentrup, Mark Hanson, Matt Haschke, Matt Jones, Frank

Teach, Doug Temme, Amy Topp and Irene Fletcher. Sponsors for this year's event included Arnie's Ford, BankFirst, Beck Ag, Elkhorn Valley Bank, F&M Bank, Grossenburg Implement, Helena Chemical Company, Kathol and Associate, Midwest Land, Nebraska Extension in Wayne County, Northeast Nebraska Insurance, Pioneer, Rath, Walling, and Associates, State National Insurance, State Nebraska Bank and Trust, The Seed Source, Tom Hansen CPA, Trisha Peters, REALTOR, TWJ Farms, TWJ Feeds, Inc, Wayne County Bank, Wayne State College and Tuffern Blue Ranch.

## Commissioners open bids for project

By Calyn Dunklau  
calyn@wayneherald.com

While the agenda was a lighter one, the Wayne County Board of Commissioners still had plenty to discuss at their Tuesday morning meeting, including a lengthy update from Highway Superintendent Mark Casey.

Casey's list began with the changes made to wording for driveway permits, denoting that the rules applied to farm field entrances covers other applications, including the proposed windmill farms to be erected in the area.

Continuing on, Casey gave an update on county road 571, west of Wayne, saying that the road was open but extremely soft and overly graveled.

"It's like driving through a sand-box," Casey said of the road.

It's currently under state control until it's signed off on by the state after it was rerouted to accommodate the new guard rails for the bridge on the highway so the county is unable

to change anything at this point, but commissioners discussed the best way to stabilize the road and plan to take action once the state signs off.

One of Casey's final points was something no one wanted to hear. "I hate to even bring this up," Casey said.

"Then don't," commissioner Randy Larson joked.

The tried and true pickup Casey drives is in need of repairs, but with its age (1998) and its mileage — 140,000+ Casey thought — the commissioners agreed that it's time to look into a new vehicle for him.

The big ticket item on the agenda started at 9:45 a.m. — the bid opening for the paving project to occur next year on 577th Road, also known as South Centennial Road. The project includes over 3,000 feet of concrete to be poured.

The project's engineering firm Mainelli Wagner & Associates gave a project total estimate of \$395,622.

Four bids came in for the project, with a wide variance between their numbers.

M.E. Collins Construction out of Wahoo bid a project total of \$537,400 with a completion date of Oct. 1, 2017. They didn't specify a start date.

The second company to submit a bid was A & R Construction from Plainview. It bid a project total of \$412,658.13. The project would begin April and finish in July.

Steve Harris Construction of Homer bid a project total of \$544,464.80, with the project slated to begin on Aug. 1 and finish Oct. 1.

The final bid came from Columbus' Gehring Construction. The project total came in at \$386,782.78. Gehring's bid gave a start date of July 17 and an end date of Oct. 2.

The commissioners had been advised to table the bidding process once bids had been received and show the project's engineer the bids to have all the numbers double checked.

The commissioners took that advice, tabling the decision for their next meeting on Dec. 20 at 9 a.m. in the Wayne County Courthouse.



(Contributed photos)

## Winside craft show successful

Shoppers found plenty to attract their attention during the Winside Craft Show and Tour of Homes. Nearly 30 vendors filled the Marotz Seed Building in Winside during the event. Also part of the days' activities was a tour of the Winside Museum (right) and five homes within the community. The event was a fundraiser for the Winside Ball Park.



## Wayne High One Act nabs 3rd place

The Wayne One Act team competed at Districts in Ord on Nov. 30, performing "Cocoanut Soup at the Palace, or If the Marx Brothers Had Performed Oedipus the King".

This play was a slapstick version of the famous Greek Tragedy.

There were a total of eight schools in the B4 District: Pierce, Norfolk Catholic, Wayne, West Point-Beemer, O'Neill, Ord, Boone Central and Madison.

Plays are scored on various aspects such as voice, characterization, staging, and timing.

Ord received first place and will go on to the state competition in Norfolk on Friday, Dec. 9.

Pierce received second place and Wayne received third place.

A school can receive up to 180 points from judges.

"The schools that came in first, second, and third were all within four points of each other, with Ord earning 178, Pierce earning 176, and Wayne earning 174. Needless to say, it's a tough competition!" said Heidi Thompson, Wayne High's coach.

Only the first place team competes at the state level.

Wayne had many students earning Outstanding Actor/Actress awards. These students

were Grace Heithold, Shanda Lambert, Sarah Wibben, Jaci Torres, Maura Loberg, Savannah Leseberg, Symphony Jareske, Megan Lambert, Makayla Heithold, Jack Osnes, Colton Paher, Megan Duncan, Claire Barnes, RJ Liska, and Aidan Consoli.

The crew and extra stage characters included Sam Bruckner, Kaden Kneif, Meghan Spahr, Emily Claussen, Stuart Hase-mann, Sarah Tompkins, Mikenzie Schaffer and Kaden Hopkins.

## Coming Soon! to Providence Medical Center

Dr. Fahed, an Oncologist, relocated to Norfolk in 2009. As a resident of the Norfolk community, he works closely with Dr. Mohammed Zahra and other physicians in providing comprehensive, up-to-date, oncology care to patients.

**Dr. Fahed will begin seeing patients at Providence Medical Center Outpatient Specialty Services in January (fourth Friday of each month)**

Dr. Fahed received his medical degree from the Lebanese University of Beirut, Lebanon. He completed a residency in internal medicine at the University of Kansas School of Medicine and a fellowship in hematology and oncology at Tulane University, New Orleans, Louisiana.

Dr. Fahed is board certified by the American Board of Internal Medicine in Hematology and Medical Oncology. He is a member of the American Society of Clinical Oncology, American Society of Hematology and the American College of Physicians. He also received his Clinical Research Certification from Tulane Public Health.

On a personal note, Dr. Fahed is married and has four children.



**Rabih Fahed, MD, CRC**



## The Wayne Herald

114 Main Street Wayne, NE 68787 402-375-2600  
PUBLICATION NUMBER USPS 670-560  
on the web at: www.mywaynews.com

Serving Northeast Nebraska's Greatest Farming Area

Established in 1875; a newspaper published weekly on Thursday. Entered in the post office and periodical postage paid at Wayne, Nebraska 68787.

POSTMASTER:  
"Address Service Requested"  
Send address change to The Wayne Herald, P.O. Box 70, Wayne, Nebraska, 68787



PRIZE WINNING  
NEWSPAPER  
2014  
Nebraska Press Association

Official Newspaper of the City of Wayne,  
County of Wayne and State of Nebraska

### SUBSCRIPTION RATES

In Wayne, Pierce, Cedar, Dixon, Thurston, Cuming, Stanton and Madison Counties - \$48.00 per year. Out-of-Area and Out-of-State - \$58.00 per year. Single copies \$1.00.  
Six-month: Area - \$36.00 Out-of-Area \$46.00.

Season's Greetings  
from the  
Wayne County Bank

On behalf of everyone at the Wayne County Bank, we wish you and your families a "Merry Christmas" and a "Happy New Year!"

Please join us for cookies & coffee  
Thursday & Friday, December 15 & 16

Wayne County Bank  
Division of Madison County Bank

Winside, Nebraska  
Member FDIC

EQUAL HOUSING  
LENDER



Last year, the IDEA classroom four through the Foundation allowed for purchases of new books and equipment in four Wayne Community School classrooms. (clockwise from top left) First graders Alexa Chavez, Dylan Jensen and Jaxon Chase chose books; Brayden Woehler, Ashlynn Parker, Ty Zach and Kingston Hanson enjoy reading new books; Noah Braun (second from left) explains the new device to Logan Milligan, Ty Grone, Seth Hochstein and Daniel Greenwald; Claire Barnes uses the new equipment.

# Foundation

**From Page 1A**

"Technology or scholarships, the kids are getting the impact on that," Lenihan said. "They're not providing funds to help us fix a leaky roof. It's not going to things the general fund would cover."

The Foundation allows donors to select the area they wish to direct funds to, be that money for a new piano in the choir room or new lockers for the locker room.

For example, the school is doing a renovation to some classrooms to enable a better set up for the addition of an ag program, which is something the budget is covering.

Someone decided they wanted to help with that cause and donated a large sum of money to go toward new equipment for the program.

Typically, larger projects that get broken into phases have a higher response in donations received. This year's project is the Kern Track Facility to the south of the Jr. and Sr. High School. A new scoreboard and lighting at the facility are needed.

The process generally involves a request coming before the board by a teacher or faculty member.

That request is discussed by

**"We appreciate all the support that everyone gives — all of our patrons, through tax dollars and all the additional donations we receive. People can be assured that those dollars go directly to the students.**

**Mark Lenihan**  
**Superintendent**

the 17-member board, which includes a school board member as well as school representatives, and eventually voted on.

The Foundation runs several programs each year to encourage people to donate such as business-matching grants and scholarships and alumni donation requests.

A classroom grant offered each year is done via application, though the selection committee voting does not know the faculty member who applied.

Four grants total, two per building, are awarded each year. The grant money is applied to

technology or other resource to be used in the classroom.

"We try to be proactive on specific needs," McLaughlin said.

To ensure there are no discrepancies monetarily, the Foundation carries out a three part system. McLaughlin, the Foundation treasurer Jodi Pulfer and the Foundation's accountant Tom Hansen all see the donation for security's sake.

As donations come in, it enables the school to keep the general fund as low as possible, which means less taxes but more opportunity.

"Either the money goes up or the quality goes down, and we want to have quality programs," Lenihan said. "If we don't have our Foundation or the boosters to help us, it affects our students and the things we can do for them."

Lenihan and McLaughlin stressed how grateful they, and their respective institutions, were to receive the funds that they do.

"We appreciate all the support that everyone gives — all of our patrons, through tax dollars and all the additional donations we receive," said Lenihan. "People can be assured that those dollars go directly to the students."

# Ring Around Wayne



Handbell Choirs from First Presbyterian Church, First United Methodist Church, Grace Lutheran Church and Our Savior Lutheran Church held a concert at the National Guard Armory on Monday. Each group did a solo piece and they all came together to perform five group pieces. A free-will offering was collected and split between the choirs to aid in bell and glove maintenance.

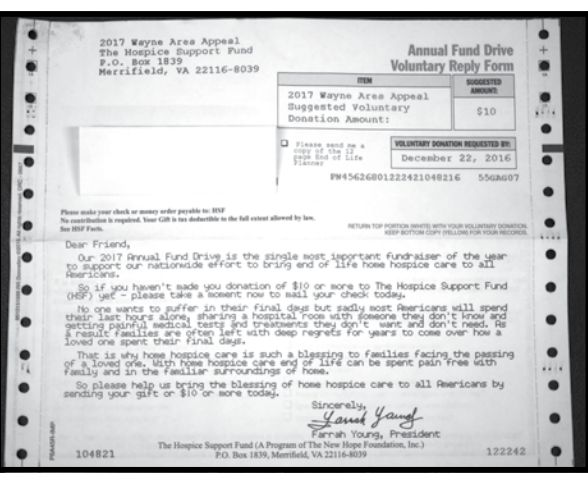
(Photo by Calyn Dunklau)

## Recent mailings not from PMC

Area residents have been receiving mailings with a title line reading "2017 Wayne Area Appeal, The Hospice Support Fund" soliciting donations.

These mailings have not come from Providence Medical Center or any of its affiliates.

PMC strongly encourages residents to please reconsider replying to this mailing and making any financial contribution to this out-of-state organization.



In the photo at left is one of the letters circulating through Wayne soliciting donations for a hospice fund. This is not affiliated with Providence Medical Center and residents should reconsider replying to this organization.

**U.S. Cellular**  
AUTHORIZED AGENT

— SWITCH & GET —

# HALF OFF

ANY SMARTPHONE PLUS, GET UP TO \$650 MORE\*

It's a great deal from the network with a stronger signal in the Middle of Anywhere.

\*In U.S. Cellular® Promo Cards



(Photo by Clara Osten)

**Making his list, checking it twice**  
Santa visits with Adalyn Hays on Saturday following the St. Mary's Elementary School Christmas musical. Santa and Mrs. Claus have been busy in recent weeks visiting with area children before heading back to the North Pole before Christmas.

## CAMPUS EVENTS...

Contact information is listed with the events when possible. If you have questions, check our calendar at [www.wsc.edu/calendar](http://www.wsc.edu/calendar) or call College Relations at 402-375-7359.

**Facing up to Beetles: An Entomologist's Perspective**  
Get up close and personal with a series of insect exhibits. The event is free and open to the public.  
**Oct. 3-Dec. 18** - WSC Carhart Science Building main floor

**Planetarium Hosts Seasonal Shows**, Carhart Science Building. A full schedule can be found at [www.wsc.edu/planetarium](http://www.wsc.edu/planetarium). Suggested donation for all shows is \$5 for adults and \$3 for kids. For information contact Dr. Todd Young at 402-375-7471 or [toyoun@wsc.edu](mailto:toyoun@wsc.edu).

**Nov. 30 - Dec. 16, Senior Art Exhibit**, Nordstrand Visual Arts Gallery, Peterson Fine Arts Building. Exhibits by senior artists Megan Otto and Gabriel Flanagan. Admission is free. For information contact Andy Haslit at 402-375-7031.

**Dec. 11 - President's Holiday Gala**, 2 p.m., Ramsey Theatre, Peterson Fine Arts Building. Ignite your festive spirit with this holiday concert featuring 11 music ensembles, faculty and student soloists and audience sing-alongs. A dessert reception follows in the Frey Conference Suite, Kanter Student Center. Admission is free. For information contact the Music Department at 402-375-7359.

**Dec. 12 - Honors Recital**, 7:30 p.m., Ramsey Theatre, Peterson Fine Arts Building. The Honors Recital will feature the highest level of performance by students

## Wayne State College

WWW.WSC.EDU

in a particular area of study. Admission is free. For information contact Music Department at 402-375-7359.

**On-Going Events:**  
**Fridays at WSC:** Jan. 27; Feb. 3, 17; March 17, April 14. Visit days for high school seniors and their families. Learn more at [www.wsc.edu/visit](http://www.wsc.edu/visit).  
**Just Juniors:** March 18. Visit day for high school juniors and their families. Learn more at [www.wsc.edu/visit](http://www.wsc.edu/visit).  
**Musicians Invited to Join Performance Groups**  
The WSC Music Department has three ensembles for the college and community to participate in -- without an audition. Bring your instruments and join the groups!

The "Symphonic Band" meets on Tuesday evenings in Room 23 of the Fine Arts Building from 6 to 7:20 p.m.  
The "WSC Orchestra" rehearses in Room 23 or in Ramsey Theatre on Sunday afternoons from 5 to 7 p.m.  
The third ensemble, the "WSC Chorale" rehearses on Monday evenings from 7 to 7:20 p.m.

For information contact Dr. Josh Calkin at 402-375-7359.

**The Wildcats are just a click away!** For athletic schedules and events go to [www.wscwildcats.com](http://www.wscwildcats.com).

**Wayne**  
214 Main Street  
402-833-5065  
CALL FOR STORE HOURS.

**Hartington**  
104 Eickhoff Industrial Road  
402-254-6801

3682827

Things we want you to know: New Shared Connect Plan, Retail Installment Contract, Device Protection+, port-in and Smartphone turn-in required. Credit approval also required. A \$25 Device Activation Fee applies. A Regulatory Cost Recovery Fee (currently \$1.82) applies; this is not a tax or govt. required charge. Additional fees (including Device Connection Charges), taxes, terms, conditions and coverage areas apply and may vary by plan, service and phone. Offers valid at participating locations only and cannot be combined. See store or [uscellular.com](http://uscellular.com) for details. **Half Off Smartphones:** 50% off rebate on base model Smartphone devices. Rebate fulfilled in the form of a U.S. Cellular Promotional Card issued by MetaBank. Member FDIC, pursuant to a license from Visa U.S.A. Inc. Valid only for purchases at U.S. Cellular stores and [uscellular.com](http://uscellular.com). Devices \$399 or higher are eligible for \$200 Promotional Card at the point of sale and remaining balance in arrears. Devices \$200-\$398.99 are eligible for \$100 Promotional Card at the point of sale and remaining balance in arrears. Devices \$200 or less are eligible for \$100 Promotional Card at the point of sale. For Promotional Cards in arrears, allow 8-10 weeks for processing after final submission. **Up to \$650 Switcher Promo:** Each line requesting up to \$650 Switcher Promo must port in current number to U.S. Cellular, purchase a new device through a Retail Installment Contract on a Shared Connect Plan with Device Protection+ and turn in their device. If device turn-in is not received before bill submission, or no device is turned in, Switcher Promo will be capped at \$350 per line. Submit final bill identifying Early Termination Fee (ETF) or final device balance owed within 60 days of activation date to [uscellular.com/contractpayoff](http://uscellular.com/contractpayoff) or via mail to U.S. Cellular Switcher Promo Program 5591-61, PO Box 752257, El Paso, TX 88575-2257. Customer will receive credit equal to the lesser of the ETF or remaining device balance reflected on final bill or \$650 subject to the conditions of the offer. U.S. Cellular Promotional Card issued by MetaBank. Member FDIC, pursuant to a license from Visa U.S.A. Inc. Valid only for purchases at U.S. Cellular stores and [uscellular.com](http://uscellular.com). Allow 8-10 weeks for processing after final submission. **Turned-in Smartphone** must be in fully functional, working condition without any liquid damage or broken components, including, but not limited to, a cracked housing. Smartphone must power on and cannot be pin locked. **Device Protection+ (DP+):** Minimum monthly price is \$8.99 per phone. A service fee/deductible per approved claim applies. You may cancel anytime. Property insurance is underwritten by American Bankers Insurance Company of Florida and provided under a Master Policy issued to U.S. Cellular. You will be the certificate holder on U.S. Cellular's Master Policy for loss/theft benefits. Service Contract Obligor is Federal Warranty Service Corporation in all states except CA (Sureway, Inc.) and OK (Assurant Service Protection, Inc.). Limitations and exclusions apply. For more information, see an associate for a DP+ brochure. Limited-time offer. Trademarks and trade names are the property of their respective owners. ©2016 U.S. Cellular P44\_2016\_LeadOffer\_Print\_6x9









(Contributed Photo)

The WBDA 7th grade Wayne basketball team played in the Tri-State Challenge in South Sioux City recently and placed first, going 3-0 with wins over Sioux City Heelan (39-20); South Sioux City (45-31) and South Sioux City Sixers (56-39). Pictured from back left: Coach Craig Sharpe, coach Josh Hopkins, Kyron Bartos, Drew Sharpe, Toby Braun, Jacob Anderson, Andrew Brunken, Jacob Karsky, coach Craig Walling. Front: Tanner Walling, Brendon Swanson, Max Miller, Brandon Bartos, Kaden Hopkins.

## WSC volleyball ends its season in regionals

Southwest Minnesota State rallied from a one-set deficit to defeat eighth-ranked Wayne State College 23-25, 25-20, 25-13, 25-19 in the opening round of the NCAA Central Regional Volleyball Tournament on Thursday at the Gangelhoff Center in St. Paul, Minnesota.

The Mustangs advance with a 27-5 record, while the Wildcats end the year with a 24-8 record.

SMSU and the Wildcats battled back-and-forth early and were tied at 5-5, until the Mustangs scored six of the next seven points to force a WSC timeout as SMSU built an 11-6 lead. WSC still trailed 16-10 in the first set when the Wildcats stormed back and gained momentum late in the set to finish with a 25-23 win.

Trailing 18-13 in the first set, WSC scored five straight points highlighted by a pair of Wildcat blocks, to even the score at 18. The Wildcats took the lead at 21-20 following a Megan Gebhardt kill and pushed the lead to 24-21. After SMSU fended off two straight set points, the Wildcats closed out the set with a Michaela Mestl kill to capture the opening set 25-23.

Wayne State used the first set momentum and held the lead for a majority of the second set, until SMSU got hot at the end of the second to take control of the match.

With the score tied at 7-7, the Wildcats forced an SMSU timeout following an Alyssa Frauendorfer kill, giving the Wildcats a 15-10 advantage.

WSC still led 19-15 in the second set when the Mustangs scored nine straight points, with six coming on kills from Taylor Reiss, that gave the Mustangs a 24-19 lead as SMSU went on to finish with a 25-20 set win.

The Wildcats held the advantage early again in the third set until

another Mustang run gave SMSU control of the set. WSC took its biggest lead of the set at 9-6 on aTarrin Beller kill, but SMSU produced seven of the next eight points to take the lead for good at 13-10. The Mustangs cruised to a 25-13 third set win.

SMSU led from start to finish in the fourth set, although WSC stayed close until late in the set as the Mustangs won 25-19 to finish with a 3-1 match victory.

WSC was within two at 15-13 after an Erin Gross kill. SMSU then scored five of the next six points to take a 20-14 lead and the Mustangs finished with a 25-19 set win.

Wayne State hit .174 in the match with 43 kills and 17 errors on 149 attempts, while SMSU posted a .354 attack percentage with 72 kills and just 15 errors on 161 attacks. SMSU held a 68-41 advantage in digs and had an 8-5 edge in blocks on the Wildcats. SMSU had five service aces and 13 errors, while WSC had three aces and two errors.

Frauendorfer led WSC with 12 kills, making her the ninth player in school history to surpass 1,400 career kills with 1,411. Mestl and junior Erin Gross each added 10 kills for the Wildcats.

Mestl finished with a team-high 22 digs, moving into fourth place on the all-time digs list at WSC with 1,894. Freshman libero Haley Kauth and Belle recorded 13 digs, while sophomore Gebhardt handed out 39 set assists.

The match marked the final contest for three Wildcat seniors - Frauendorfer, Mestl and Opperman.

Earlier in the week, Frauendorfer was named to the American Volleyball Coaches Association (AVCA) All-Central Region honorable mention team, announced Wednesday

by the coaches' association website. It's the fourth year she has received post season honors from AVCA.

Frauendorfer, from Humphrey (Humphrey HS), leads the Wildcats in kills per set (3.01) and attack percentage (.351), while also averaging 0.77 blocks per set this season.

She was named First Team All-NSIC for a fourth straight season, joining Rayna Nelsen Cain (1999-2002) as the only other Wildcat player to be a four-time All NSIC selection.

Frauendorfer was also named NSIC Offensive Player of the Week after posting a career-high 30 kills in a 3-2 win at Bemidji State on Oct. 29. She currently ranks ninth on the all-time kills list at WSC with 1,399.

Last season, Frauendorfer was AVCA All-Central Region and Third Team All-American. As a sophomore, she was AVCA All-Central Region and honorable mention All-American and was named AVCA Central Region Freshman of the Year in 2013 to go along with AV-

## Winside girls fall to Wynot

The Winside girls basketball team dropped a 61-15 decision to Wynot in action Friday at Winside High School.

The Blue Devils limited the Wildcats to just two baskets in the second half as the Winside girls fell to 0-2 on the season.

Callie Finn and Morgan Remm each scored four points to lead the Winside girls. Andi Bargstadt put in three points and Alex Bargstadt and Alyssa Brogren each had a field goal. Alex Bargstadt had four steals and Brogren led the rebounding department with four.

Winside opened the season with a 46-30 loss to Plainview at home. Statistics were not available at press time.

	Wynot 61,	Winside 15
Winside	4 5 2 2	- 15
Wynot	12 22 19 8	- 61

WINSIDE - Finn 4, Alex Bargstadt 2, Remm 4, Brogren 2, Andi Bargstadt 3.  
WYNOT - Scoring not available.

CA All-Central Region First Team and AVCA honorable mention All-American.



(Courtesy of Northeast Community College)

Savannah Nelson, of Wakefield High School, has signed with Northeast Community College to play volleyball for the Hawks in the 2017 season. Pictured (front row) are Blaine Nelson, father, Savannah Nelson, and Donna Nelson, mother. Back row are Iris Borg, Wakefield coach, Matt Brenn, Wakefield athletic director, and Amanda Schultze, Northeast head volleyball coach.

## WSC Track & Field start the season on a good note

The WSC track and field teams traveled to Brookings, S.D., this weekend for the season opening South Dakota State Holiday Open, held at the Sanford-Jackrabbit Athletic Complex, where the Wildcats were in the front of the pack for multiple events.

For the men's team, Braxton Adams and Robert Sullivan each won events for Wayne State.

Sullivan, a sophomore, crossed the finish line first in the 60 meter hurdles in 8.38 seconds and also collected a sixth place finish in the long jump at 21' 4 3/4".

Adams was the other event winner for the Wildcats, taking first in the 60 meter dash in 7.05 seconds.

Sophomore Alvyns Alcenord also excelled in the sprints, taking fifth in the 60 meter dash (7.11) and 11th in the 200 meter dash at 23.22 seconds.

Junior Derek Lahm was another top finisher for the Wildcats, collecting a pair of second place finishes in the long jump (22' 11 3/4") and triple jump (46' 8"), while Habib Jallow was second place in the 300 meter hurdles in 40.17 seconds.

Senior Josh Spinner cleared 14' 7 1/4" in the pole vault to take third overall, while junior Brady Metz earned a pair of fourth place finishes in the long jump (21' 6") and the triple jump (46' 4"). Nick Fly was third in the 1,000 meter run (2:38.00) and freshman Nathan Pearson came in seventh in the 800 meter run (2:03.20).

In the throwing events, Matthew

Nemec was eighth in the weight throw (52' 4 1/2"), while freshman Jayle Hinkle was ninth in the shot put at 46' 4 3/4".

Individuals for the women's indoor track and field team also did well in the meet.

Junior Michaela Dendinger reached NCAA provisional marks in the shot put and weight throw to lead the Lady 'Cats.

Dendinger, who redshirted last year with a foot injury, posted a second place finish in the shot put with a top mark of 46' 10 1/4" followed by a third place effort in the weight throw at 58' 1/4", both NCAA provisional qualifying marks. Other top finishers in field events for the Wildcat women included junior Tessa Ives fifth in the weight throw (48' 3/4") and Tia Jones ninth in the shot put (39' 11 1/4").

Freshman Riana Noelle was fifth in the triple jump (34' 9 3/4") and 10th in the long jump (15' 2 1/4"), while sophomore Shelby Roth cleared 5' 1" to take seventh in the high jump.

Top Wildcat running performances included a fourth place finish from Mary Alderson in the 800 meter run (2:31.73), Melissa Kroll was fifth in the 400 meter dash (59.43) and sophomore Rachel Rauner was 15th in the 60 meter dash with a time of 8.26 seconds.

Wayne State resumes the outdoor track and field season on January 13 and 14, 2017 at the Holiday Inn Invitational hosted by the University of Nebraska in Lincoln.

**New Year's Eve**  
**IRON HORSE CASINO**  
 www.winnbagocasinos.com  
 1106 S. Main St. • Emerson  
 402-695-0180  
 Invites you to celebrate with us

**5K Cash Bonanza**  
**December 31, 2016**

9:00 p.m. \$1000.00  
 10:00 p.m. \$1000.00  
 11:00 p.m. \$1000.00  
 12:00 a.m. \$2000.00

Hats and Noisemakers  
 Complimentary Champagne  
 toast at midnight

**\$5000.00 in Cash Prizes**

Prime Rib Dinner  
 \$18.95 per person

The Iron Horse Casino is owned and operated by the Winnebago Tribe of Nebraska. The Iron Horse Casino reserves the right to change or substitute promotion without notice. Must be legal age. Must be present to win. See Casino for details. 402-695-0180.

**We'll Put Collision Damage in Reverse**  
 Let our certified technicians quickly restore your vehicle to pre-accident condition with a satisfaction guarantee.

**Tom's BODY & PAINT SHOP, INC.**  
 108 Pearl Street  
 Wayne, Nebraska  
**402-375-4555**

**ONLY AT DQ**  
**BLIZZARD BIRTHDAY**

**Candy Cane**  
**OREO** Blizzard® Treat  
 COOKIE

OREO® cookie pieces | Peppermint candy cane bits  
 OREO is a registered trademark of Mondelez International group, used under license.

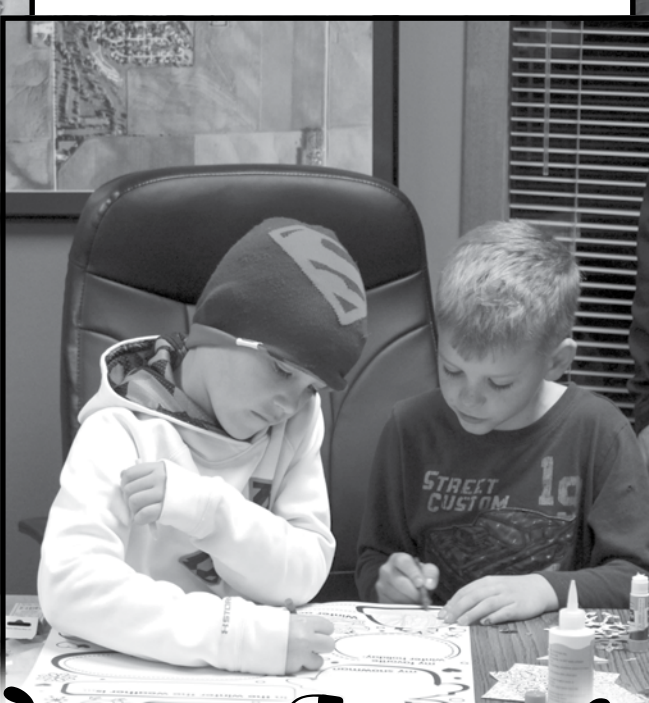
**DQ Grill & Chill**  
 Open Every Day  
 10 AM - 11 PM

Valid only at:  
 DQ Grill & Chill  
 708 Main St  
 Wayne, NE 68787  
 402.375.1404

All trademarks owned or licensed by Am. D.Q. Corp. ©2016. ®, TM, and ©2016 O.J. of Am.  
 X550926-1

**Closed Dec 24-25 and Dec 31-Jan 1**





# Night of Lights Laurel, NE



(Photos by Sandra Cross, Calyn Dunklau)

Last Thursday, Laurel hosted its annual Night of Lights downtown. Carolers, a photo booth, crafts and Santa made this night a memorable one. Businesses downtown and throughout Laurel celebrated with sales, wine and food tastings and prize drawings.

# THE GREAT HOLIDAY GIVEAWAY

The Wayne Herald is  
*In The  
Holiday Spirit*

November 15th - December 20th  
**WEEKLY PRIZES:**

Prizes consist of Gift Certificates worth \$100.00, \$50.00, \$25.00 and 5 - \$15.00 Gift Certificates will be made out for the business in which the name was drawn.

Drawings will be held each Thursday starting November 17 with the last drawing to be held on December 22

## This Week's Holiday Giveaway Winners are:

- \$100 - Betty Bothwell, Pac N Save
- \$50 - Janet Barry, JB Mart
- \$25 - Virgil Loewe, Tacos & More
- \$15 - Jennifer Bruckner, Rain Tree
- \$15 - Kathleen Frevert, Wayne Greenhouse
- \$15 - Jean Ping, State Nebraska Bank & Trust Co.
- \$15 - Marc McCright, Lutt Oil
- \$15 - Jill Niemann, Mandaly Sun

Stop at the Wayne Herald to pick up your certificates

## Bulk Mixed Nuts

# \$3.99

Lb.



**PAC N SAVE**



GROCERY STORE

1115 W. 7th St. Wayne, NE 68787

HOURS: 7:30 a.m.-10:00 p.m. 7 Days A Week!

[www.pacnsavegrocery.com](http://www.pacnsavegrocery.com)

## Holiday Open House & Customer Appreciation Night

Friday, December 9th  
5:00 - 8:00 pm

**10% Off All In-Stock Items**  
Free Beer, Wine & Liquor Tasting

Thank you for your continued business and support!

421 Main  
Wayne  
375-2090



## GET A TASTY DEAL!

# 3 TENDER Meal

# \$6.49

Comes with Wedges, Biscuit, 1 Sauce + 32 Oz. Fountain Drink

Not valid with any other offer. Limit 1 per visit.

603 N. Main, Wayne  
375-9982

"Great Friendly Service"



Join us Fri, Dec 23<sup>rd</sup>, 10am  
Holiday Chamber Coffee



STATE NEBRASKA BANK & TRUST  
122 Main Street Wayne, NE 68787 (402) 375-1130 [www.statenebank.com](http://www.statenebank.com)

# THE GREAT HOLIDAY GIVEAWAY



Let Santa Help You  
With That New  
Furniture Purchase!

## DISCOUNT FURNITURE

SERVING NORTHEAST NEBRASKA SINCE 1984 • OPEN MON.-SAT. 9 AM-5 PM; THURSDAY UNTIL 8 PM  
1 1/2 MILES NORTH OF WAYNE • 375-1885 OR 1-855-375-1885  
•EASY TERMS, 90 DAYS SAME AS CASH •FREE DELIVERY & SET-UP

## Fredrickson Oil Co.

Hwy. 15 N • Wayne, NE  
402-375-3535 1-800-672-3313  
Open 7 Days A Week • 7:00 AM - 9:30 PM



**For Your Service Needs —**  
**Tires, Tuneup, Brakes,**  
**Exhaust, Computer Analysis,**  
**Air Conditioning & Alignments**  
**Free Pickup and Delivery**

**On-The-Farm Tire & Tank Wagon Service**

## Gift Cards!

Buy a \$25 Gift Card - Get \$5 FREE  
Buy \$50 Gift Card - Get \$10 FREE  
Buy \$100 Gift Card - Get \$25 FREE



Christmas Cut-  
Out Cookies  
Available

## Tacos & More

mexican and sandwich shop  
"Come See What's Cookin' at Tacos & More!"  
509 Dearborn • 375-4347 • tacosandmore.net  
Open Daily at 7 a.m. 7 Days A Week

15% off  
TOYS



## Grossenburg Inc.

servicing your GROWING needs  
www.grossenburg.com  
South Dakota Winner (605) 842-2040  
Pierre (605) 224-1631  
Philip (605) 859-2636  
Nebraska Wayne (402) 375-3325  
Bloomfield (402) 373-4449  
Hartington (402) 254-3908



Member FDIC

## Security Bank

My Kind of Bank

Laurel 402.256.3247 Osmond 402.748.3321 Allen 402.635.2424 Hartington 402.254.2455 Coleridge 402.283.4251  
www.mysecbank.com

## GURLEY'S ALMOND BARK

\$1.99  
20 OZ.



517 Dearborn Street  
Wayne  
402-375-1540

OPEN 7 DAYS A WEEK  
7:30 AM - 9:00 PM

QUALITY FOODS MIDWEST AFFILIATED  
IGA HOMETOWN PRIDE HOME OWNED & OPERATED

Not all  
ornaments  
hang from  
the tree



## The Diamond Center - Flowers & Wine

221 Main Street • Wayne, NE 68787  
402-375-1804 • 1-800-397-1804  
www.flowersnwine.com  
www.diamondking.biz

WE BUY GOLD EVERY DAY



Gas • Snacks • Beverages  
Car Wash • Oil Changes • Tires  
Cenex Gift Cards  
Full-Service Mechanics

310 South Main Street • Wayne, NE  
Shop | 402.375.2121  
Office & Station | 402.375.3037



## Merry Christmas from The Wayne Greenhouse & Gift Shop

Gift Ideas and Home Decor

- Adult Color Books, Journals, Calendars
- Yankee Holiday Scented Candles & Candle Warmers
- Willie Ray Santas & Snowmen
- Nativities •Battery Lighted Candles
- Lighted Snowmen Wall Pictures
- Wreaths, Garlands and Centerpieces
- Puzzles •Dominos •Stocking Stuffers
- Holiday Napkins •Poinsettias



## The Wayne Greenhouse

215 East 10th Street • Wayne • 402-375-1555  
www.thewaynegreenhouses.com

It's not too late  
to get your  
Christmas letter  
typed and printed,  
envelopes addressed,  
packages shipped,  
pictures framed,  
and stocking stuffers  
purchased at



**COPY-WRITE**  
216 Main Street • 402.375.3729  
www.keepsakecopywrite.com

And you may be a  
Holiday Giveaway winner too!

## Godfather's Pizza

106 S. Main St. • Wayne • 402-833-5077

- MONDAY•  
Jumbo for a Large Charge
- TUESDAY•  
Large 1-Topping — \$10  
Large Specialty Pizza — \$13
- WEDNESDAY•  
Large 2-Topping and Cheese Sticks — \$15  
Jumbo 2-Topping and Cheese Sticks — \$19
- THURSDAY•  
Free Cookie with purchase of a Large Specialty Pizza  
Free Cookie & 2 Liter Pop  
with purchase of a Jumbo Specialty Pizza
- FRIDAY•  
8 Free Wings with Purchase of a Jumbo Specialty Pizza  
6 Free Wings with Purchase of a Large Specialty Pizza
- SATURDAY•  
Large for Medium Charge  
Free Large Cheese Sticks & Cooking  
with purchase of a Jumbo Specialty Pizza
- SUNDAY•  
Free Medium Cheese Sticks with purchase of a Large Pizza  
Free Large Cheese Sticks with purchase of a Jumbo Pizza

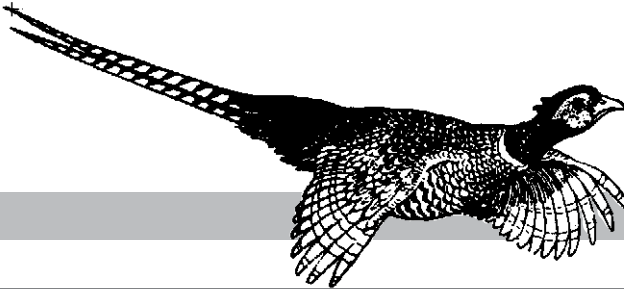
Stop in and register for  
the Holiday drawings!



**CUBBY'S**  
206 Oak St.  
Wakefield, NE 68784  
402-287-2614

## Godfather's Pizza Express

402-287-9082



# Opinion

## Parking problems plague Wayne

To the Editor,  
"We live in a town where we can park anywhere from 5 a.m. until Midnight when the town is the busiest and park nowhere when the town is not busy," a quote by a prominent Wayneite!

After going to the council to request that signs "NO PARKING from Midnight - 5 a.m. be removed from my street and being defeated even though I had the signatures of all residents to include home owners and renters on the block that approved, I feel I need to share my findings.

It has been 16 years since a proposal was on the ballot to have the signs removed and to my understanding, it was written in such a way that voters did not understand it. (Repeal is the word that throws people off)

\$26,000 a year is collected for parking tickets which if researched, the majority is collected from college students. (Monetarily raping the college students who because of their presence, many people have jobs in Wayne.)

In asking why the signs were approved in the first place, I received these answers:

1. For snow removal, so that means we cannot park on the street 355 days out of the year so snow can be removed for the 10 days that snow might be on the streets.

2. For emergency vehicles, so access to dwellings is easier. That means that we have to have emergencies only from Midnight to 5 a.m.

3. People have supposedly left cars on the street for weeks where grass has even grown up around them!!!!!! At present, there is a 72 hour ordinance, I understand.

Some streets are only 25' and today's emergency vehicles need 31'. When meeting with the Council, I was asked why the proposal should be approved for our block as was told it would have caused an influx of requests with many others wanting the same. Was this not the answer?????

The form I used was like a mini petition which had actually been used by a resident to get parking on a street as he had kids who were driving, so more cars. Neighbors did not agree. After many weeks and months of questions, this information was located and given to me.

Parking tickets supposedly are not written until after about 2:30, however, they sometimes are still there at 8 in the morning. (Wise choice. They have sense enough to stay off the streets when they have been drinking.)

College now pays parking with their tuition so parking south of the college is minimal. This will prove whether the college does have enough parking which has always been in question.

Streets from 7th - 10th, and 4 blocks east of Main are very narrow. Two cars cannot pass when cars are parked on the street so really should be ONE WAY with Logan one way being North. An accident is waiting to happen as heading south on that street towards 7th, the exit of the car wash creates a skating rink in winter. I was told, people do not like one way streets. It's like tasting fried snails, how do you know if you haven't tried them!!!!

Many young residents mentioned difficulty having friends over on an evening knowing their guests all have to call down to the police station for approval even though they are not staying overnight and another resident mentioned out of town relatives which if they are staying more than one day, you still have to call in every day.

Rental properties do have enough spaces for inhabitants, however, there is no space for visiting friends. And friends visit at night!

There are streets in town, Oak Drive for one, where no signs exist. I am told it is because the street is wider.

A petition needs 1,000 signatures to be placed on the ballot.

One survey was done, in regard to the area south of the college which I stated should be ONE WAY. The question was in regard, to the signs. Over 400 people said NAY to having them removed, however, there probably are not even 200 residents in that area and the majority are college students who could not sign the petition.

College kids do not respect the cops in town. But they are fulfilling a duty set before them by the council. With the loss of so many law officials around the country, it is time we protect them. Who is to say that no one will put a gun on one when just one more ticket is being written?????

In my day, the cops took us home if we were too impaired to drive and told us to pick up the car the next day. (Not me, I was always a designated driver-had that headache only once.)

I happen to be a transplant having lost my house to the tornado in 2014. My moving experience was a \$90 parking fine. My kids had come with moving vans from out of state. The Grace Lutheran Church has a parking lot across from me so I asked a parishioner if we could park there. The response was 'I am sure it is okay, just so you are out by 8:30 on Sunday morning. We had tickets the next morning.

Everyone should have known, that in order to park in the church lot, you had to call the Police Dept.!!!!!!

And with that I question. We pay our Police Dep't to patrol private property??????

The new petition will read somewhat like this:

To allow parking on our streets from Midnight - 5 a.m. for a trial period of one year and then those who wish to keep the parking restriction will come before the council with their block approval signatures.

- Hilda Pearson

## Capitol View

# Pay attention, it's budget time

By J.L. SCHMIDT  
Statehouse Correspondent  
The Nebraska Press Association

LINCOLN — Can there be anything more important to Nebraskans than a 30-point football loss to Iowa and a 9-3 season?

Yes, yes there can. Start with a projected \$895 million revenue shortfall by the end of the next two-year state budget cycle in 2019. That's a big enough concern that the major focus of the coming session of the Nebraska Legislature will be on the budget, almost from Day One. And if it isn't, it should be.

While the state's Tax Rate Review Committee acknowledged the looming shortfall during a recent meeting, lawmakers stopped short of recommending a special session to deal with the issue. But the outgoing chair of the Appropriations Committee, Sen. Heath Mello, and the head of the Legislature's Executive Board, Sen. Bob Krist, said the issue deserves immediate attention when the 105th Legislature convenes next month.

Both Omaha lawmakers said planning should begin now. Given that 17 freshmen Senators and 18 with two years of experience will constitute the majority of the 49-member body, a plan is not only a great — but essential — idea.

The opening days of the session can be messy business, with Senators jockeying for committee leadership positions and some pushing for open elections to those seats — it is currently done by secret ballot. There are also rules to be adopted and new bills to be introduced. On top of everything else, as committee chairs are picked, some senators have to move into different offices.

Then there's the threat of budget cuts — dangling like some legendary Sword of Damocles — and the desires of the Governor and some of his minions to provide continuing property tax relief. Conflict at its best.

The veteran director of the Legislative Fiscal Office, Mike Calvert, told that special committee of



BAD SANTA

senators and Revenue Department personnel that the federal match rate for Medicaid — health care for low income people — will rise for the first time in about six years. But with no changes to the state's financial picture, the projected shortfall becomes \$1.2 billion by 2021.

Krist cautions against the state cutting its way out of the shortfall and points to that approach in the 2009 session and its negative impact on needed programs such as the Department of Corrections. That could leave further property tax relief out of the question.

Recently re-elected Sen. Dan Watermeier of Syracuse said property tax reforms — a major concern for fellow farm and ranch landowners — may have to wait until future years.

Term-limited Mello said the current fiscal situation was caused by a downturn in revenues. Tax Com-

missioner Tony Fulton agreed that a slowdown in the state's agricultural sector was a primary cause, adding that corn at "\$3.50 (per bushel) is a lot different than \$7.50 (per bushel) corn."

He explained that commodity prices have hurt farm incomes creating a drag on the state's largest industry.

That has a ripple effect on the rest of the economy when farmers reduce their spending.

Calvert said the less-favorable strength of the dollar for all exports and underperforming corporate income tax revenues add to the problem.

Gov. Pete Ricketts has placed a ban on nonessential out-of-state travel and instituted a hiring freeze in state agencies for all positions that aren't critical. He has also instructed the state budget office to cut quarterly allotments to state agencies by 1 percent every

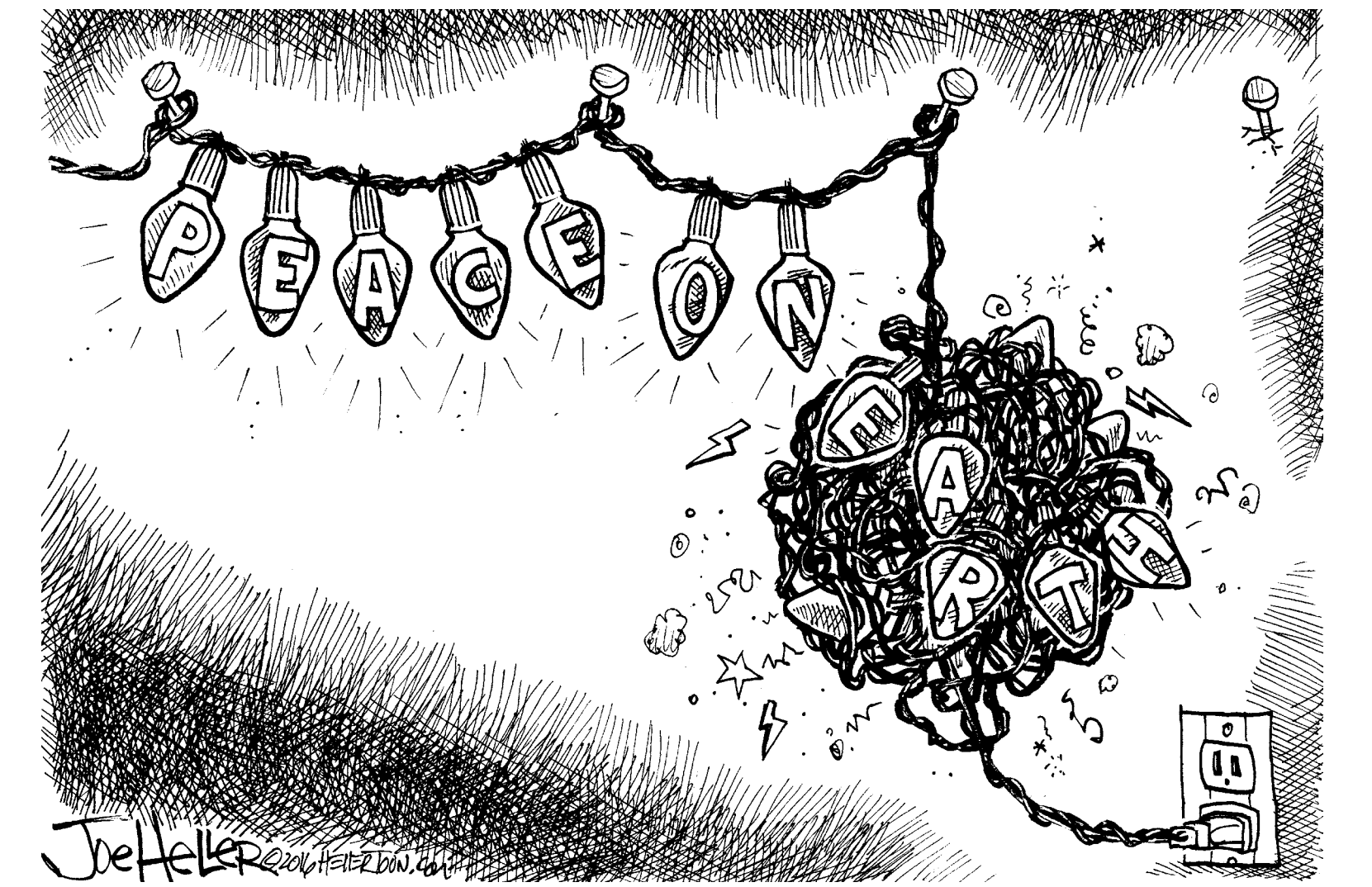
three months.

Fulton said state agencies, including his own, are already taking steps to tighten their belts and watch their pennies. State Sen. John Stinner of Gering, who hopes to succeed Mello as Appropriations Chair, has cautioned that any legislation that costs a lot of money probably won't pass next year.

Stinner and other colleagues say they are reluctant to tap the now-healthy cash reserve fund — the constitutionally mandated rainy day money that has kept Nebraska from suffering the financial woes of other states for 30 years or more.

There you have it. Kinda makes that football score seem inconsequential now, doesn't it?

J.L. Schmidt has been covering Nebraska government and politics since 1979. He has been a registered independent for 17 years.



Joe Heller

## Letters Welcome

Letters from readers are welcome. They should be timely, brief (no longer than one type-written page, double spaced) and must contain no libelous statements. We reserve the right to edit or reject any letter.

## Got News?

402-375-2600

800-672-3418

Fax:

402-375-1888

Advertising: whclass@inebraska.com or melissa@wayneherald.com

The views expressed on this page are not necessarily that of this newspaper



News  
Clara Osten  
clara@wayneherald.com



Man. Editor  
Calyn Dunklau  
calyn@wayneherald.com



Publisher  
Kevin Peterson  
kevin@wayneherald.com

Contact me with concerns from classified ads to editorial

## Wayne City Council Members

<b>First Ward</b> Nick Muir — 369-0795 Rod Greve — 375-1486	<b>Third Ward</b> Cale Giese — 369-2145 Jason Karsky — 369-3877
<b>Second Ward</b> Jennifer Sievers — 833-1234 Matt Eischeid — 375-1944	<b>Fourth Ward</b> Jon Haase — 375-3811 Jill Brodersen — 833-5504

Mayor  
Ken Chamberlain  
375-1699

The Wayne City Council meets the first and third Tuesdays of the month. Meeting times are at 5:30 p.m. at the City Council chambers, located in the Wayne City Offices at 306 N. Pearl St.

# Allen News

Nicole Johnson  
newspaperallen@icloud.com  
P.O. Box 196, Allen, Neb. 68710

## Kids' Christmas Shoppe

Saturday, Dec. 10 from 11 a.m. to 2 p.m. at the Allen Methodist Church, located at 402 Summit Drive, phone (402) 635-2207. Everyone is welcome Come and shop for gifts for your family. Enjoy Lunch and a free movie. No money is required for children to shop for their family members.

## School Lunch Menu

**Friday, Dec. 9:** Breakfast — Chocolate Donut. Lunch — Hamburger on a snow saucer, blizzard mashed potatoes, road slush gravy, winter fluff.

**Monday, Dec. 12:** Breakfast — Biscuits and gravy. Lunch — Stromboli, broccoli with cheese sauce, tea roll.

**Tuesday, Dec. 13:** Breakfast — French toast. Lunch — Hot ham and cheese, baked beans, Sun Chips.

**Wednesday, Dec. 14:** Breakfast — Omelet. Lunch — Biscuits and gravy, corn.

**Thursday, Dec. 15:** Breakfast — Yogurt. Lunch — Hot dog on a bun and tator tots.

**Friday, Dec. 16:** Breakfast — Pop Tart. Lunch — Christmas dinner ham, mashed potatoes with gravy, tea roll, chocolate ice cream.

## Senior Center Menu

Milk and bread served with all meals. Meals subject to change.

**Friday, Dec. 9:** French toast, ham, pineapple juice, fruit cocktail.

**Monday, Dec. 12:** Ham & scalloped potatoes, peas, plums.

**Tuesday, Dec. 13:** Muffin pizza sauce, pepperoni cheese, cottage cheese, carrot salad, pineapple.

**Wednesday, Dec. 14:** Fish, mashed potatoes, creamed corn.

**Thursday, Dec. 15:** Burgers, baked fries, corn, peaches.

**Friday, Dec. 16:** Biscuits and gravy, sausage, plums and tomato juice.

## Birthdays, anniversaries

**Friday, Dec. 9:** Betty Carr, Ka-

tie Hancock, Travis McNear, Peggy Terry, and Ronelle Woodward.

**Saturday, Dec. 10:** Callie Anderson, Rhiannon Chapman, Brooklyn King, Mary Kay Mahler, and Joshua Olsen

**Sunday, Dec. 11:** Kenna Anderson, Ann Maxey, David McCorkindale, Carter Parr, Kathleen Plueger

**Monday, Dec. 12:** Breanne Benstead, Anthony Isom, Isabella Kumm, Duane Lund, Tammy Twohig

**Tuesday, Dec. 13:** Jeff Surber, Harlan Woodward.

**Wednesday, Dec. 14:** Myrna Roeber, Caidan Schager, Kyle Smith.

**Thursday, Dec. 15:** Dustin Conway, Eunice Diediker. Joe Grone, David Rastede, Colin Runyan, Chris Swanger.

**Friday, Dec. 16:** Kathy Boswell, Janice Harder, Joseph Wortman.

## Sports, Activities Calendar

**Saturday, Dec. 10:** ACT Test.

**Monday, Dec. 12:** JVG (2) quarters/JVB/VG/VB Basketball,

at Pender, 5 p.m.

**Tuesday, Dec. 13:** JVG (2) quarters/JVB/VG/VB Basketball, at Hartington, 4 p.m.

**Wednesday, Dec. 14:** G/B Basketball - Split.

**Thursday, Dec. 15:** Boys BB Early.

**Friday, Dec. 16:** Boys Basketball Early; K-12 Winter Concert, Gym - 7 p.m.

## Misc. School Information

Competitive Speech: Students need to get permission forms back and sign up to meet with coaches at least once next week to get started on the season.

Jr. Class Poinsettias Sales: The Poinsettias plants are here just in time for the holidays. You may pick up the plants at the school. They are first come, first serve.

-6" Pot, \$15; 7.5" Pot, \$20; 12" Bowl \$25. All proceeds go to support the Junior Class and Prom 2017.

Band Fundraisers: Puffin Orders will be delivered on Dec. 12. Cutlery order forms due to Mrs.

Levine on Monday, Dec. 5.

Semester Test Schedule: School dismissed at 1 p.m. both days - Thursday, Dec. 21: even period - Thursday, Dec. 22: odd periods. No school for Elementary students.

Attention parents and students: We are trying to evaluate how much the my Homework App is being used in order to determine if it has been a help to students, and if it is an efficient use of time.

If you have found that it has been very HELPFUL to you this semester, and you do NOT want to see it discontinued, please talk to Mrs. Oswald in the office (loswald@esu1.org or 402-635-2484) before the end of this semester. Thank you!

## Community Calendar

**Monday, Dec. 12:** Village Board 7:30 p.m. at Village Office; American Legion/ Auxiliary, 7:30 p.m. at Auxiliary Building; Board of Education, 7 p.m. at School; Quilt Club, 7 p.m.

**Tuesday, Dec. 13:** Fire & Res-

cue Meeting, 7:30 p.m. at Fire Hall.

**Saturday, Dec. 17:** Christmas party at Senior Citizen, 9-11 a.m.

**Sunday, Dec. 18:** St. Anne's Catholic Church (Dixon), 8 a.m.; St. Paul Lutheran Church, 8 a.m.; First Lutheran Church, 9 a.m.; United Methodist Church, 9 a.m.; Trinity Lutheran Church, 9 a.m.; St. Michael's Catholic Church (Coleridge), 10 a.m.; Evangelical Free Church, 10:30 a.m.

## Community Hours

Library: Wednesday — 4-6 p.m., Friday — 9 a.m. - noon; Monday — 9 to 11 a.m.

Post Office: Monday - Friday — 7:45 - 11:45 a.m.; Saturday — 9:45 - 10:30 a.m.

Gas Station: Monday - Saturday — 6 a.m. - 10 p.m., Sunday — 7:30 a.m.-8 p.m.

Bank: Monday - Friday — 8:30 a.m.-noon, 1 - 4 p.m.; Saturday — 8 - 11 a.m.

Senior Citizen Center: Monday - Thursday — 7 a.m. - 11 a.m.; Friday — 7 - 11 a.m.; Saturday — 7 a.m.-noon.

# The Wayne Herald

# Year End Sale

## The Annual Subscription/Renewal Giveaway Runs Through December!

If you subscribe or renew during this time, your name will be entered into a drawing. Twenty lucky winners will receive a \$50 Gift Card to one of four Wayne locations.

The drawing will be held the first week of January and winners will be published in the Morning Shopper.

No Purchase Necessary

Name _____	Charge to Visa or Mastercard
Address _____	_____ Visa _____ Mastercard
City _____ State _____ Zip _____	Card # _____
Phone Number _____	Name on card _____
	Exp. date _____

Enclose money (or credit card info) and send to:

**The Wayne Herald**  
PO Box 70  
Wayne, NE 68787

**SUBSCRIPTION RATES:**  
\$48 for Area (Wayne, Pierce, Cedar, Dixon, Thurston, Cuming, Stanton or Madison Counties)  
\$58 In-State • \$58 Out-State

## Tips to enjoy a warm, safe winter by Black Hills Energy

LINCOLN — With winter weather arriving in Nebraska, Black Hills Energy has prepared for winter and is providing an important safety message to make sure its customers are prepared as well.

"Like a fireman when the bells ring, Black Hills Energy's winter emergency plans are in place, and our employees are ready to respond quickly and effectively when called upon," said Jeff Sylvester, vice president for Black Hills Energy's Nebraska gas operations. "Safe, reliable service is always our priority," he said. "We offer home safety tips and suggestions at [www.blackhillsenergy.com](http://www.blackhillsenergy.com) to help our customers prepare as well."

A stockpile of blankets, flashlights and fresh batteries (including a fully charged cellphone) are a good start, Sylvester said. "We all recently set our clocks back an hour, and it's a good time to change the batteries in smoke and carbon monoxide detectors. It is a quick and easy process and could be a life-saver.

"Natural gas is a clean, safe, reliable source of energy for heating more than 70 million homes in the United States," Sylvester said. "You schedule regular maintenance on a car for efficient performance, safe operation and longer life. In the same way, it's important to get an annual furnace inspection and tune-up to ensure that your heating equipment is running efficiently and safe created in the combustion process."

Carbon monoxide is a colorless and odorless byproduct of the incomplete burning of fuels including wood, gasoline, charcoal and natural gas.

Signs of a potential carbon monoxide leak can include, but are not limited to, flu-like symptoms - a scratchy throat, runny nose, headache, drowsiness or nausea.

Other indicators could include frosted windows due to excessive humidity, or a draft from the front of the furnace when it is not turned on.

If you think carbon monoxide is present, leave the premises immediately and call 911 and Black Hills Energy's emergency service line, 800-694-8989, from a nearby location.

## JASON SEARS FLOORING

402-833-1784

210 Main Street  
Wayne, NE

MON - THURS: 9:00-5:00  
FRI: 9:00-4:00 SAT BY APPOINTMENT

Free Estimates

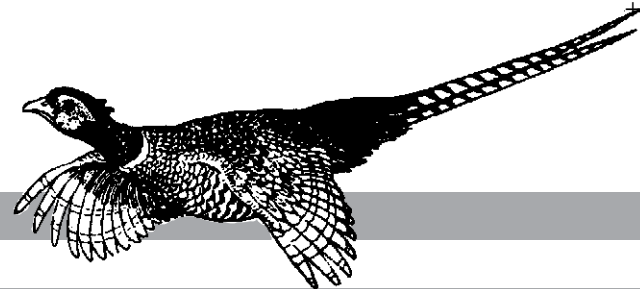
## THE GUTTER CREW

Seamless Gutters & Downspouts  
28 Years of Experience

Art Sehi (402)776-2563  
Steve Cornett (402)776-2646

PO Box 27 Oakdale, NE 68761  
(402)776-2600 • 1-800-867-7492

# Lifestyle



## Senior Center

### Congregate Meal Menu

(Week of Dec. 12 — 16)  
Meals served daily at noon.  
For reservations, call 375-1460  
Each meal served with water,  
2% milk, skim milk and coffee.  
All menus subject to change.

**Monday:** Meatloaf, gravy, mashed potatoes, creamed corn, raspberry gelatin with applesauce, dinner roll, Promise, bread pudding. Drawing to win a poinsetta.  
**Tuesday:** St. Lucia Day. Rotisserie pork loin,

roasted russet potato, pork gravy, green beans, pears, whole wheat fresh bread, Promise.

**Wednesday:** Second grade carolers. Spaghetti & meatballs, honey glazed carrots, lettuce salad with carrots & Dorothy Lynch dressing, peaches, garlic bread stick, Promise.

**Thursday:** Special luncheon. Sliced ham, sweet potato casserole, peas, pineapple/pistachio salad, whole wheat fresh bread, Promise, assorted fruit pies.

**Friday:** National Chocolate Day. Fried pollack, tartar sauce, baked potato, mixed vegetables, whole wheat fresh bread, Promise, apricots.

### Senior Center Calendar

(Week of Dec. 12 — 16)  
**Monday, Dec. 12:** FROG Exercises, 9:15 a.m.; Walking; Quilting; Pool; Hand & Foot; Pitch. Come in for dinner and your name will be entered into a drawing to win a poinsetta.

**Tuesday, Dec. 13:** Morning Walking; Quilting; St. Lucia Day. Continue with your Life Story with Rita from the Wayne Public Library. Pitch, Afternoon Bridge Club; Coffee time, 2:30 p.m.

**Wednesday, Dec. 14:** FROG Exercises, 9:15 a.m.; Walking; Quilting; Wayne Elementary Carolers, directed by Monica Jensen, 12:30 p.m.; Hand & Foot; Pitch, Pool.

**Thursday, Dec. 15:** Morning Walking; Quilting; Phil & Kelly Concert, 11:30 a.m.; Special Luncheon with pie, sponsored by Lowell & Kathy, noon; Pitch; Afternoon Bridge club; WRAP with Brookdale, 2-4 p.m.

**Friday, Dec. 16:** Morning Walking; FROG Exercises, 9:15 a.m.; Quilting; Bingo, 1 p.m.; Hand & Foot; Pitch; National Chocolate Day. Bring your favorite chocolate snack to share.

Look Who's Turning 90!  
**CARD SHOWER**  
Ella Mae Victor  
December 14th

Cards can be sent to:  
607 Nebraska  
c/o Heritage of Emerson  
Emerson, NE 68733

Every Wednesday  
Night ~ Burger, Fries  
& Drink ~ \$5.00

Every Thursday  
Night ~  
Prime Rib ~ \$13.95

121 W. 1st St. Wayne  
402-375-4774

**MAJESTIC THEATRE**  
NOW SHOWING  
**Dec. 8 - Dec. 11**  
**Doctor Strange**  
(PG13)  
Thursday: 7:00 p.m.  
Friday: 7:00 p.m.  
Saturday: 7:00 p.m.  
Sunday: 2:00 p.m.  
Admission \$5  
E.T. the Extra-Terrestrial  
FREE sponsored by  
Trisha Peters, Realtor  
and Tom Hansen, CPA  
Saturday: 3:00 p.m.

COMING SOON:  
Arrival, Moana

310 Main Street  
Wayne  
402-833-1833  
majesticonmain.org  
Titles and times subject to change.  
Please check the website!

Courtesy of Hasemann Funeral Homes  
Scott & Mary Kay Hasemann

## Understanding social, emotional needs of kids

**Cedar County**

**Jackie Steffen**  
Extension Educator  
UNL Extension

Social and emotional learning skills help to make good citizens, good learners and successful people. 4-H has integrated life skill development into content specific youth projects with the intent of helping youth develop skills that will influence multiple aspects of their health and well-being.

Social-emotional health and well-being involves the social, mental, and psychological aspects of an individual's life.

With the support of caring adults, youth can actively contribute to and enhance their social-emotional health and competence within the following areas:

Self-awareness—accurately assessing one's feelings, interests, values, and strengths;

Self-management—regulating one's emotions to handle stress, control impulses, and persevere in overcoming obstacles;

Social awareness—being able to take the perspective of and empathize with others;

Relationship skills—establishing and maintaining healthy and rewarding relationships based on cooperation;

Responsible decision making—making decisions based on consideration of ethical standards, safety concerns, appropriate social norms, respect for others, and likely consequences of various actions.

So, can participation in a 4-H club make a difference in a young person's social-emotional life? The answer is YES! One of the greatest benefits of 4-H clubs is the cross-age teaching that takes place.

This occurs when 4-Hers share their skills and knowledge with youth who are either younger or older than them. Older and younger youth both benefit from cross-age teaching.

Younger children respond enthusiastically to their peer's behavior modeling, so rapport is established very quickly. Cross-age teaching is an effective way to support high impact social and emotional learning, both for the younger and older 4-H youth.

**This is why it works:**  
• Older youth form an identity around the role of being the teacher. Younger youth feel "at ease"

with the older youth and display heightened participation in emotion-based activities.

• The smaller age gap in cross-age teaching emphasizes social-awareness, as both the younger youth and the youth teachers tackle each other's strengths and limitations.

• The younger youth observe positive role-model skills that they can immediately apply to other aspects of their lives.

• Enriched relationship skills are created between younger and older youth.

In 4-H, social and emotional learning is not something that we have to work hard to embed into our programming. It is the nature of what we do -- it's already happening. To learn more about 4-H, contact your local Nebraska Extension Office.

**References:**  
4-H Healthy Living Logic Model—Social-Emotional Health and Well-Being: [https://nifa.usda.gov/sites/default/files/asset/document/4-H%20HL%20Logic%20Model\\_Social-Emotional.pdf](https://nifa.usda.gov/sites/default/files/asset/document/4-H%20HL%20Logic%20Model_Social-Emotional.pdf).

The Relationship between Cross-Age Teaching and Social & Emotional Learning: <https://www.extension.umn.edu/youth/research/sel/docs/issue-brief-relationship-between-cross-age-teaching-and-sel.pdf>.

## School Lunches

### ALLEN COMMUNITY SCHOOLS (Dec. 12 — 16)

**Monday:** Breakfast — Biscuits & gravy. Lunch — Stromboli, broccoli with cheese sauce, tea roll.

**Tuesday:** Breakfast — French toast. Lunch — Hot ham & cheese, baked beans, sun chips.

**Wednesday:** Breakfast — Omelet. Lunch — Biscuits & gravy, corn.

**Thursday:** Breakfast — Yogurt. Lunch — Hot dog on a bun, tator tots.

**Friday:** Breakfast — Pop Tart. Lunch — Christmas dinner. Ham, mashed potatoes with gravy, tea roll, chocolate ice cream.

Most breakfast meals include: Choice of cereal or oatmeal. All breakfast meals include: 8 oz. milk, fruit or fruit juice. All lunch meals include: 8 oz. milk and salad bar. Salad bar may include the following options: fresh lettuce, fresh spinach, carrots/celery, tomatoes, diced eggs, bean variety, cucumbers, fruit variety.

donut. Lunch — Hamburger.

**Tuesday:** Breakfast — Breakfast sandwich. Lunch — Stromboli.

**Wednesday:** Breakfast — Omelet & toast. Lunch — Mr. Ribb.

**Thursday:** Breakfast — French toast sticks. Lunch — Hamburger gravy over mashed potatoes.

**Friday:** Breakfast — Breakfast burrito. Lunch — Breaded chicken sandwich.

Menus are the same for Elementary, Middle and High School and are subject to change.

Orange juice, skim milk, fruit, yogurt and salad bar are available daily. All breads and pasta are whole grain.

### WAKEFIELD SCHOOLS (Dec. 12 — 16)

**Monday:** Breakfast — Pancakes & sausage, oranges. Lunch — Chicken nuggets, green beans, homemade bun, pineapple.

**Tuesday:** Breakfast — Cinna-bun, oranges. Lunch — Ham & Swiss casserole, peas, wheat grain roll, peaches.

**Wednesday:** Breakfast — Frudels, pears. Lunch — Barbecue meatballs, macaroni & cheese, breadsticks, mandarin, oranges.

**Thursday:** Breakfast — Long John, cheesestick, banana. Lunch — Deli sandwich, baked beans, pears.

**Friday:** Breakfast — Cereal, animal crackers, applesauce. Lunch — Chicken noodle soup, peanut butter & jelly sandwiches, carrots & celery, juice. Milk and juice are served every day with breakfast. Milk is served with lunch.

### WAYNE COMMUNITY SCHOOLS (Dec. 12 — 16)

### LAUREL-CONCORD-COLERIDGE COMMUNITY SCHOOLS (Dec. 12 — 16)

**Monday:** Breakfast — Twist

**Card Shower**  
90th Birthday  
**Esther Brader**  
December 8, 2016  
Send cards to:  
819 Pearl Street  
Wayne, NE 68787

**Wayne's Got It...**

...\$700 Chamber Bucks to be given away in the Holiday Stamp Card Promotion. Get your card at any participating business: Bomgaars, Copy Write, Dairy Queen, Diamond Center/Flowers & Wine, Doescher Appliance, Final Touch, Grossenburg Implement, G's Quick Stop, Hair Envy Salon

Jason Sears Flooring, Magnuson Hopkins Eye Care, Moments Portrait Boutique, Pac N Save, Pizza Hut, Quality Food Center, Rustic Treasures, Swans Apparel, Thrift Warehouse, US Cellular, and Wayne Vision Center.

You in?

**THE final TOUCH**

40th  
Holiday Season  
Savings  
Storewide  
plus  
stacked deals of  
additional  
**40-50-60%**

like & follow...  
/thefinaltouchwayne

1 block east of Main...  
south end of Logan St  
downtown Wayne  
**402-375-2035**

for all things  
**Christmasy...**

**Hallmark**  
Keepsake Ornaments  
&  
Holiday Greetings

1000's of gift ideas  
toys games puzzles  
family friendly dvd's  
nativity scenes  
gift cards available

mail your  
**Santa Letters**  
at the  
North Pole  
Post Office

located at  
The Final Touch

**Specialized Care Close to Home.**

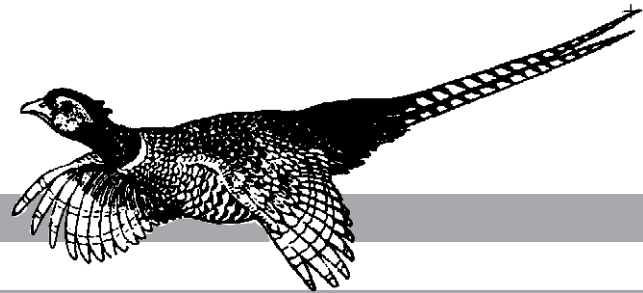
**Orthopedic Outreach Clinic**  
Dr. John Lamml and Steven Janssen, PA-C, provide orthopedic services at  
Providence Medical Center the fourth Friday of every month.

For an appointment please contact your local physician or call (402) 375-7953.

**Faith Regional Physician Services, LLC.**  
301 N. 27th St., Ste 5, Norfolk  
www.frpsclinics.org

1200 Providence Road, Wayne  
www.providencemedical.com

John Lamml, MD Steven Janssen, PA-C



# Faith

## Church Services

### Wayne

**BAHA'I FAITH**  
1002 West 2nd Ave.  
(402) 833-5202 or (402) 833-0117  
Contact: Chris Tee Weixelman or Gary Weddel  
**Second Sunday of the month:** Prayers and Pastry, 10 a.m. - Open to all religions and spiritual convictions. Prayers from all faiths welcome. **Friday:** 7:30 p.m. Study Circle. Investigate spiritual concepts and the relation of life and death.

**CALVARY BIBLE EVANGELICAL FREE**

502 Lincoln Street  
(402) 375-4946  
website: [www.cbefc.org](http://www.cbefc.org)  
email: [james@cbefc.org](mailto:james@cbefc.org)  
(James Seal, pastor)  
**Sunday:** Sunday School, 9 a.m.; College Class, 9 a.m.; Worship service, 10:30 a.m. **Wednesday:** Call to Prayer, 7 p.m. Various Bible Studies - call for more information.

**FAITH BAPTIST Independent - Fundamental**  
208 E. Fourth St. - 375-3413  
(Pastor Jim Scallions)  
**Sunday:** Sunday school, 10 a.m.;

Worship, 11 a.m.; Evening worship, 7:30 p.m.

**FIRST BAPTIST**  
400 Main St. 375-3608  
(Douglas Shelton, pastor)  
**Sunday:** Sunday School, Adult and children's classes, 9:15 a.m.; Prayer and Fellowship, 10:15 a.m.; Worship, 10:30 a.m.

**FIRST PRESBYTERIAN**  
216 West 3rd St. 375-2669  
[www.fpcwayne.org](http://www.fpcwayne.org)  
**Sunday:** Hand Bell Choir rehearsal, 8:45 a.m.; Sunday School Christmas Program Practice, 9 a.m.; Worship with Communion, 10 a.m.; Congregational Meeting to elect officers, 11 a.m.; Fellowship, 15 a.m.; Narcotics Anonymous, 6 p.m. **Monday:** Scout Den Meeting, 7 p.m. **Wednesday:** Caroling at Brookdale and Careage, 5 p.m.; Soup supper to follow.

**FIRST TRINITY LUTHERAN**  
Altona, LC-MS  
57741 847th Road, Wayne  
(Rev. Terry Makelin, pastor)  
(402) 336-7819 cell phone  
**Sunday:** Sunday School, 9:35 a.m.; Divine Worship with Holy Communion, 10:45 a.m. **Wednesday:** Soup Supper, 6:30 p.m., followed by Advent Worship at 7:30 p.m., St. John's Lutheran Church, Pilger.

**FIRST UNITED METHODIST**  
6th & Main St.  
(Pastor Kyle Nelson)  
**Saturday:** Mobile Food Pantry, 10 to 11:30 a.m. **Sunday:** Third Sunday of Advent. Communion. Worship Service, 9 a.m.; Bible Study, 10:15 a.m.; UMW Meeting, 10:15 a.m.; Sunday School, 10:15 a.m.; Youth Group, 5 p.m.; **Monday:** Junior Girl Scouts, 3:30 p.m.; Faithful Fitness, 5:30 p.m. **Tuesday:** Faithful Fitness, 5:30 p.m. **Wednesday:** Bell Choir Practice, 5:45 p.m.; Church Council meetings, 6:30 p.m. **Thursday:** Bible Study & Communion, 9 a.m.; Faithful Fitness, 5:30 p.m.; Bible Study, 6:30 p.m.

**GRACE LUTHERAN**  
Missouri Synod  
904 Logan  
[grace@gracewayne.com](mailto:grace@gracewayne.com)  
(The Rev. Michael Feldmann Senior Pastor)  
The Rev. Carl Lilienkamp, Associate Pastor  
(Stephen Ministry cong.)  
**Sunday:** Lutheran Hour on KTCH, 7:30 a.m.; Worship with Communion, 8 and 10:30 a.m.; Sunday School, 9:15 a.m. Bible Study, 9:30 a.m.; Table Talk, 8 p.m. **Tuesday:** Blood Bank, 1 p.m.; Cup of Grace Finals Breakfast, 9 p.m. **Wednesday:** Bible Study, 9 a.m.; Ladies Aid Christmas Luncheon, noon; Bell Choir, 5 p.m.; Advent Supper, 6 p.m.; Advent Worship, 6:30 p.m.; Midweek, 7:15 p.m.; Choir, 7:30 p.m.

**JEHOVAH'S WITNESSES**  
Phone 375-2631 or 375-3427 for information

**JOURNEY CHRISTIAN CHURCH**  
1110 East 7th St.  
[www.journeychristian.org](http://www.journeychristian.org)  
375-4743  
(Troy Reynolds, minister)  
(Jeremy Jech, minister of dis-

cipline)  
**Sunday:** Christians Hour on KTCH, 8:45 a.m.; Worship, 9 and 10:30 a.m.; Small group, 6:30 p.m.; Life group at various homes, 7 p.m. (also on several other days of the week).

**OUR SAVIOR LUTHERAN**  
421 Pearl St. • 375-2899  
[oslc@oslewayne.org](mailto:oslc@oslewayne.org)  
(Rev. Jeanne Madsen, senior pastor)  
**Friday:** Great Bible Stories at Careage, 10 a.m. **Saturday:** Mobile Food Bank, 10 to 11:30 a.m.; Worship, 5:30 p.m. **Sunday:** Coffee Hour, 9 a.m.; Worship, 10 a.m.; **Monday:** Staff meeting, 2 p.m.; Executive Committee, 7 p.m. **Tuesday:** Bible Study at Tacos & More, 6:45 a.m.; Bible Study at Brookdale, 10:30 a.m.; Communion at Careage of Wayne, 2:30 P.M.; Communion at Brookdale, 3:30 p.m.; Faith Builders, 7 p.m. **Wednesday:** Advent Supper, 5:45 p.m.; Joyful Noise, 6 p.m.; Advent Worship, 7 p.m.; Choir, 7:30 p.m. **Thursday:** Faith Builders, 1 p.m. **Saturday:** Worship, 5:30 p.m.

**PRAISE ASSEMBLY OF GOD**  
1000 East 10th St. 375-3430  
Rev. Philip Pfaltzgraff, Interim Pastor  
**Sunday:** Sunday School, 9:30 a.m.; Morning Worship Service, 10:30 a.m. **Wednesday:** Bible Study, 6:30 p.m.

**ST. MARY'S CATHOLIC**  
412 East 8th St.  
(Fr. Jeff Mollner, pastor)  
375-2000; fax: 375-5782;  
E-mail: [parish@stmaryswayne.com](mailto:parish@stmaryswayne.com)  
**Friday:** Mass, 8 a.m.; Adoration, 8:30 a.m. **Saturday:** Salvation Army Bell ringing, 10 a.m.; Mass, 6 p.m. **Sunday:** Mass, 8 and 10 a.m.; Hospitality Sunday, hosted by Confirmation class; Mass, 9 p.m.; Spanish Mass has been moved to Emerson on Sundays at 10 a.m. For more information contact Sacred Heart Parish at (402) 695-2505. **Monday:** Fr. Mollner's Day off; Our Lady of Guadalupe Mass. Prayer Group, 3:15 p.m.; Blue Knights and Little Flowers, 6:45 p.m. **Tuesday:** Adoration, 4:30 p.m.; Mass at 5:15 p.m.; Adoration, 6 p.m.; Newman Community Night, 8 p.m.; Newman Mass, 9 p.m. **Wednesday:** Mass, 8:15 a.m.; Adoration, 4:30 p.m.; Mass, 5:15 p.m.; Posada, 6:45 p.m.; Religious Education Classes, 6:45 to 8 p.m. **Thursday:** That Man is You, 6 a.m.; Newman Thursday, 11:30 a.m.; Adoration, 4:30 p.m.; Mass, 5:15 p.m.; Hispanic Prayer Group & rosary at church, 6 p.m.; Confessions, 6 p.m.; R.C.I.A., 7 p.m. **Friday:** Mass, 8 a.m.; Adoration, 8:30 a.m. **Saturday:** St. Mary's School Gift Wrapping. Mass, 6 p.m.

**ST. ANNE'S CATHOLIC**  
(Fr. David Liewer, pastor)  
**Saturday:** St. Mary's in Laurel, 6 p.m. **Sunday:** St. Anne's in Dixon, 8 a.m.; St. Michael's in Coleridge, 10 a.m.

**PEACE UNITED CHURCH OF CHRIST**  
(Pastor Clark Jenkinson)  
**Sunday:** Sunday School, 9:30 a.m.; Worship with Communion, 10:30 a.m.

**TRINITY EVANG LUTHERAN**  
(Rodney Rixe, pastor)  
**Sunday:** Trinity Bible Hour, 9 a.m.; Worship, 10 a.m.

**EVANGELICAL COVENANT**  
802 Winter St.  
e-mail: [wakecov@msn.com](mailto:wakecov@msn.com)  
**Saturday:** Spanish Service, 7 p.m. **Sunday:** Morning Worship, 10 a.m.; Spanish Service, 3 p.m.; Adult Bible Study, 7 p.m. **Tuesday:** Spanish Service, 7 p.m. **Wednesday:** Confirmation, 4:15 p.m.; Snak Shak, 5:30 p.m.; Pioneer Club, 6:15 p.m.; Junior High & Senior High Bible Studies, 6:30 p.m. **Saturday:** Spanish Service, 7 p.m.

United Methodist Church.

**Carroll**  
**ST. PAUL LUTHERAN**  
(Pastor Harrison Goodman)  
**Sunday:** Worship service, 8 a.m.

**UNITED METHODIST CHURCH**  
(Pastor Kyle Nelson)  
**Sunday:** Third Sunday of Advent. Worship Service with Children's Christmas Program, 11 a.m.; No Sunday School until Jan. 8. **Wednesday:** Carroll United Methodist Women, 1:30 p.m.

**Concord**  
**CONCORDIA LUTHERAN**  
**Sunday:** Sunday School, 9:30 a.m.; Worship Service, 10:45 a.m.

**ST. PAUL LUTHERAN East of town**  
(Willie Bertrand, pastor)  
**Sunday:** Worship service, 8 a.m. **Tuesday:** Bible Study with Jensens at Countryview in Wayne, 9 a.m. **Wednesday:** Confirmation and Midweek Classes at St. John's, 4 p.m.

**EVANGELICAL FREE**  
(Pastor Todd Thelen)  
(Pastor Scott Kahn)  
**Sunday:** Worship Service, 8 a.m.; Fellowship Time, 9 a.m.; Sunday School for all ages, 9:30 a.m.; Worship Service, 10:30 a.m.; Evening Bible Study, Axiom (Senior High Youth), Praying Kids Mighty in Power, 7 p.m. **Wednesday:** Awa-na, 7 p.m.

**Dixon**  
**ST. ANNE'S CATHOLIC**  
(Fr. David Liewer, pastor)  
**Saturday:** St. Mary's in Laurel, 6 p.m. **Sunday:** St. Anne's in Dixon, 8 a.m.; St. Michael's in Coleridge, 10 a.m.

**Hoskins**  
**PEACE UNITED CHURCH OF CHRIST**  
(Pastor Clark Jenkinson)  
**Sunday:** Sunday School, 9:30 a.m.; Worship with Communion, 10:30 a.m.

**WAKEFIELD**  
**CHRISTIAN CHURCH**  
3rd & Johnson  
Gary Patterson, Pastor  
email: [wakechristian@gmail.com](mailto:wakechristian@gmail.com)  
Internet web site: [www.wakefieldcc.blogspot.com](http://www.wakefieldcc.blogspot.com)  
**Sunday:** Christian Hour, KTCH, 8:45 a.m.; Prayer Warriors, 9 a.m.; Sunday School, 9:30 a.m.; Praise and Worship, 10:30 a.m.

**Wanted ... Church news**  
The Wayne Herald would like to print information and schedules from area churches. All information submitted to the Herald by Monday at 5 p.m. (delivered to the Herald office) or emailed by 8 a.m. on Tuesday will be included in that week's edition of the paper. Articles can be mailed to P.O. Box 70, Wayne, Neb. 68787 or emailed to [clara@wayneherald.com](mailto:clara@wayneherald.com). The Herald thanks its readers and area ministers for their cooperation in our effort to keep informed on the happenings at various churches.

**WIC and Immunization clinic coming up Dec. 14**  
Pender will hold the Pender WIC and Immunization clinic on Wednesday December 14th, 2016 from 8:30 am to 4:00 pm at Northeast Nebraska Community Action Partnership (603 Earl Street, Pender NE). For an appointment or for more information regarding the WIC or Immunization Programs please call (402) 385-6300. NENCAP's WIC Program provides nutrition education and supplemental foods to income eligible pregnant, breast-feeding or postpartum women, infants, and children to age 5 years. \*This institution is an equal opportunity provider\* Northeast Nebraska Community Action Partnership (NENCAP), headquartered in Pender, NE, is one of nine Community Action Agencies in Nebraska.

**WIC and Immunization clinic coming up Dec. 14**  
Pender will hold the Pender WIC and Immunization clinic on Wednesday December 14th, 2016 from 8:30 am to 4:00 pm at Northeast Nebraska Community Action Partnership (603 Earl Street, Pender NE). For an appointment or for more information regarding the WIC or Immunization Programs please call (402) 385-6300. NENCAP's WIC Program provides nutrition education and supplemental foods to income eligible pregnant, breast-feeding or postpartum women, infants, and children to age 5 years. \*This institution is an equal opportunity provider\* Northeast Nebraska Community Action Partnership (NENCAP), headquartered in Pender, NE, is one of nine Community Action Agencies in Nebraska.

**Advance Counseling Services, LLC**  
Jan Chinn, MSE, LMHP, CPC  
• Child & Adolescent Concerns • Abuse & Trauma Counseling • Stress Management • Coping with Divorce • Grief & Loss • Depression & Anxiety • Marital & Family Counseling • Employee Assistance Services  
Phone: 402-833-5246  
220 W. 7th St., Wayne • In the BankFirst Building

**VEL'S CATERING**  
Meats of all kinds, serving to buffet style  
Serving Full Meals!  
Parties • Weddings • Anniversaries  
Catering to all sizes of groups  
**Vel's Bakery**  
309 Main Street  
Hours: Monday - Saturday, 6 am to Noon  
375-2088

**This year, stuff their piggy banks instead of their stockings**  
To learn about all the holiday gift options available, call or visit a financial advisor today.  
**Wes Pinkerman, AAMS®**  
Financial Advisor  
300 Main St  
Wayne, NE 68787  
402-375-4172  
[www.edwardjones.com](http://www.edwardjones.com)  
Member SIPC  
**Edward Jones**  
MAKING SENSE OF INVESTING

**NORTHEAST NEBRASKA INSURANCE AGENCY, INC.**  
111 West 3rd • Wayne • 402-375-2696

**Burrows Family Dentistry**  
617 Pearl Street, Suite 1 • Wayne, NE 402-375-1124

**PAC-N-SAVE**  
GROCERY STORE  
Open 7 Days A Week  
7:30 AM to 10 PM  
Home Owned & Operated  
1115 W. 7th • Wayne, NE • 402-375-1202  
[www.pacnsavegrocery.com](http://www.pacnsavegrocery.com)

Donald E. Koeber, O.D.  
**WAYNE VISION CENTER**  
313 Main Street - Wayne, NE  
402-375-2020

**Tom's Body & Paint Shop, Inc.**  
Dan & Doug Rose Owners  
108 Pearl Street • Wayne • 402-375-4555  
Over 40 years of service to you!

**Elkhorn Valley BANK AND TRUST**  
Northeast Nebraska's Locally Owned, Independent, Community Bank  
411 East 7th Street  
Wayne, NE 68787  
402-375-2525  
[www.elkhornvalleybank.com](http://www.elkhornvalleybank.com)  
Member FDIC

**FARMERS State Bank**  
CARROLL, NEBRASKA 68723  
Member FDIC

**The Wayne Herald**  
114 Main • Wayne • 402-375-2600

**Grossenburg**  
servicing your GROWING needs  
[www.grossenburg.com](http://www.grossenburg.com)  
South Dakota Winner (605) 842-2040  
Nebraska Pierre (605) 224-1631  
Wayne (402) 375-3325  
Bloomfield (402) 373-4449  
Phillip (605) 859-2636  
Hartington (402) 254-1908

**Wayne**  
117 S. Main • Wayne, NE.  
Bus. 402-375-3424  
Home 402-375-2380  
Locally & Family Owned  
in Wayne for 47 Years!  
**CARQUEST**  
AUTO PARTS

# The old story is ever new

Warren Wiersbe once said this in describing the Christmas story "The story is old, but it is ever new, and God's people never tire of it."

It's easy to get tired during this season though isn't it? The running around getting presents bought for all your family and friends. Decorating the house just right so you can take it all down again in a few weeks. Going to the grocery store to stock up on all the food and fixins for Christmas dinner, and then going back again for all the stuff you forgot, and then going back again after that.

The reason for Christmas, the Christmas story of a Savior who came to earth in the form of a baby, wrapped in swaddling clothes and born in a manger, is old, it's been heard and recited, and read, and Christmas programmed for years and years, yet as Weirsbe says it is (or at least should be) ever new, and God's people should never tire

*A Word In Faith*



**By Justin Raulston**  
Director, CSF Partners

of hearing it. We should never tire of it, not because it's some great story that keeps you on the edge of your seat, or because the person telling it is a great orator, but rather because it is more than a story, it is the true story that changes all of our stories for all of eternity.

It may be old in chronological, historical time, but it is still ever new. There are still many who have not heard it. This summer a

college student from our CSF Camp Team was at a high school church camp serving and after a late night of worship, a girl from her small group was waiting outside. Our college student went to visit with her and the girl said to her: "I have a question I want to ask you, but you're probably going to think it's stupid."

After assuring her that she wouldn't the high school girl said

this: "Who is this Jesus? He seems great, but I've never met Him, who is He?"

Now understand she wasn't asking to know more Jesus. She literally had never heard of this man named Jesus, and wanted to be introduced.

We live in a culture and a world in which many people have never been introduced to the man named Jesus. They've never heard of the baby wrapped in swaddling clothes in a manger. They've never been introduced to the Savior of the world, who came to earth, lived a perfect life, died on a cross for their sins and ours, and rose from the dead, so all could have eternal life.

They've never heard the old, old story. The Christmas story is ever new, to so many people. May those of us who have heard it, never grow tired of sharing it with others this season!

Merry Christmas and God bless.

## HEALTH CARE DIRECTORY

### OPTOMETRIST

#### MAGNUSON-HOPKINS EYE CARE

Dr. Larry M. Magnuson  
Optometrist  
215 West 2nd St., Wayne, NE 68787  
Telephone: 402-375-5160

Dr. Josh Hopkins  
Optometrist

#### WAYNE VISION CENTER

DR. DONALD E. KOEBER  
OPTOMETRIST  
Phone 375-2020  
313 Main St. Wayne, NE

We Specialize in Preventative Dentistry



### Burrows Family Dentistry

Rob Burrows, D.D.S.

617 Pearl Street • Suite 1 • Wayne, NE 68787  
402-375-1124

#### MEMBERSHIP RATES

	Yearly	6 Month
Family	\$330.00	\$220.00
Adult Single	\$185.00	\$110.00
Adult Couple	\$255.00	\$140.00
Senior Single	\$95.00	\$55.00
Senior Couple	\$120.00	\$75.00
College Year	\$130.00	
College Semester	\$75.00	
College 9 Month	\$110.00	
College Couple	\$205.00	
High School	\$110.00	\$65.00
Middle School	\$90.00	\$55.00
Elementary School	\$70.00	\$50.00

#### DAY RATES

18 & over - \$5.00  
17 & under - \$4.00  
Family Day Pass - \$10.65

#### PUNCH CARDS

10 Day - \$36.00  
5 Day - \$24.00

#### Wayne COMMUNITY ACTIVITY CENTER

901 West 7th Street  
402-375-4803

— LOCKERS —  
Large \$35 • Medium \$25 • Small \$15

### DO YOU SUFFER FROM SLEEP PROBLEMS ASSOCIATED WITH LEWY BODY DEMENTIA?

Trouble Sleeping? Moving or Talking in Your Sleep?  
Vivid or Intense Dreams?  
Experience Sleep Disturbances?

You may qualify for a research study that is evaluating the safety and effectiveness of a new investigational medication that may help to reduce the symptoms of Lewy Body Dementia or Parkinson's Disease Dementia if:

- You are aged 50 - 85 years with a diagnosis of Dementia with Lewy Bodies
- You regularly experience issues sleeping or reaching REM sleep
- You are willing to take part in Overnight Sleep Lab studies
- Medications you take have been on a consistent dose for at least 4 weeks

For More Information, Please Contact  
Premier Psychiatric Research Institute, Dr. Walter Duffy or  
Kelly Espenschade at (402) 817-2235 or  
Chaitasi Majmudar at (402) 476-6060 ext. 225



### Beneath a Shining Star

Students in pre-school through sixth grade at St. Mary's Elementary School presented a Christmas program entitled "Beneath a Shining Star" on Dec. 3. Pre-schoolers and kindergarten students sang several songs and wished everyone a Merry Christmas. Fifth and sixth grade students took on the roles of Mary, Joseph, angels, shepherds, townspeople and a star to tell the Christmas story, while first through fourth grade students accompanied with a variety of songs.



## Gifts For Kids

Help Herman Chiropractic donate new, unwrapped toys for kids in need. All toys donated will be given to our local Wayne County Gifts for Kids.



December 5th-December 16th

Existing & New Patient Specials  
Please call for more details.

### Herman CHIROPRACTIC

1302 W 7th Street  
Wayne, NE 68787  
402-375-3450

309 Main Street  
Pender, NE 68047  
402-385-0183

## Foot and Ankle Outreach Clinic

Dr. Zackary Gangwer with Faith Regional Physician Services provides podiatric foot and ankle services at

Providence Medical Center the first and third Thursday of every month.

For an appointment please contact your local physician or call (402) 375-7953.

- Adult and Pediatric Foot and Ankle Reconstruction
- Carcot Reconstruction
- Diabetic Limb Salvage and Wound Care
- Fracture Care
- Sports Injuries
- Total Ankle Replacement
- Trauma



FAITH REGIONAL  
Physician  
Services, L.L.C.  
301 N. 27th St., Ste 5, Norfolk  
www.frpsclinics.org

PMC  
Providence Medical Center  
1200 Providence Road, Wayne  
www.providencemedical.com

Zackary Gangwer, DPM

PROVIDING INFORMATION, ASSISTANCE AND EDUCATION ON COMMUNITY SERVICES AND LONG-TERM CARE OPTIONS FOR SENIORS (AGE 60+), PEOPLE WITH DISABILITIES OF ALL AGES, THEIR FAMILY MEMBERS, CAREGIVERS AND ADVOCATES.



**ADRC Nebraska**  
Serving all Nebraskans

ADRCNebraska.org  
Call Toll-free 1-844-843-6364

OPTIONS COUNSELORS AVAILABLE BY PHONE  
MONDAY - FRIDAY 8 A.M. - 5 P.M.  
(EXCLUDING HOLIDAYS)

Follow us on Facebook: <https://www.facebook.com/ADRCNebraska>

**Looking for work in Nebraska?**



Visit [www.NEHires.com](http://www.NEHires.com) for more job postings. Search by region of the state, job category, keyword. You can also link to individual newspapers' online job postings from NEHires.com.

**See what Nebraska employers have to offer!**

# Business & Professional Directory

**ACCOUNTING**

**Certified Public Accountant**

**Kathol & Associate P.C.**

104 West Second Wayne  
402-375-4718

**REAL ESTATE**



• Farm Sales  
• Home Sales  
• Farm Management

**MidwestLand COMPANY**

206 Main • Wayne, NE • 402-375-3385  
Quality Representation For Over 48 Years!

**INSURANCE**

**Complete Insurance Services**

• Auto • Home • Life  
• Farm • Business • Crop



**ELKHORN AGENCY**

Gary Boehle - Steve Muir  
411 E. 7th - Wayne 375-2511  
ElkhornAgency@elkhornvalleybank.com

**SERVICES**

**The Century Club**  
STATE NEBRASKA BANK & TRUST

ARE YOU 50 or BETTER?

Free Movies  
Group Travel  
for more info

Contact Kaki Ley  
(402) 375-1130



122 Main St. Wayne

**Northeast Nebraska Insurance Agency**

111 West Third St. Wayne  
402-375-2696

• Auto • Home • Life  
• Health • Farm

Serving the needs of Nebraskans for over 50 years.  
Independent Agent

**JOHN'S WELDING & TOOL LLC**

375-5203 • 800-669-6571

Lathe & Mill Work; Steel & Aluminum Repair & Fabrication  
24 Hr. Service • Portable Welder  
Pivot Bridges & Steel Feed Bunks

Hours: 8:00 am - 6:00 pm Mon.-Fri.;  
8 am - Noon Sat.  
After Hours - 402-369-0912  
320 W 21st St., 1 mi North &  
1/8 West of Wayne.

**State Farm**

Like a good neighbor, State Farm is there.®

Auto, Home, Life, Health



Rusty Parker, Agent

402-375-3470  
202 Pearl Street • Wayne

**VEHICLES**

**HEIKES Automotive Service**

• ASE Certified  
• Complete Car & Truck Repair  
• Wrecker • Tires • Tune-up  
• Computer Diagnosis

419 Main Street Wayne  
Phone 402-375-4385

**PLUMBING**

For All Your Plumbing Needs Contact:



**Spethman Plumbing**  
Wayne, Nebraska

Jim Spethman  
402-375-4499

**YAMAHA**  
Kawasaki  
Honda  
Come ride with us.

• Motorcycles • Jet Skis  
• Snowmobiles

**B&B Cycle**

So. Hwy 81 Norfolk, NE  
Phone: 402-371-9151

# AG SEMINAR PROVIDES INFORMATION



The Wayne Area Economic Development and Ag Task Force hosted the annual Agriculture Outlook Seminar and Appreciation Luncheon on Dec. 2. The event is designed to provide information on various topics related to agriculture and thank the ag producers in the community for the work they do. This year's topics included "Soil Health, Our Health" presented by Marty Marx with the Natural Resources Conservation Service, "Veterinary Feed Directives" by Dr. Melissa Heithold from the Wayne Veterinary Clinic and "Who is Telling Your Farm Food Story" by Hilary Maricle with the American Farm Bureau Federation Promotion and Education.

## Applications being accepted to assist rural areas with water and waste problems

USDA Rural Development is accepting applications for funds available to help private non-profit organizations assist rural Nebraska communities in water, wastewater, and solid waste needs.

The application deadline is Dec. 31, 2016.

Two types of funding are available, technical assistance and training grants, and solid waste management grants.

**TECHNICAL ASSISTANCE AND TRAINING (TAT) grants** help qualified, private non-profits with tax-exempt status that have the proven ability, background, experience, and capacity to provide technical assistance or training on a national, regional or state basis.

These associations will provide services in rural areas and towns with fewer than 10,000 people or on Tribal lands in rural areas.

**Technical Assistance and Training (TAT) Grants are used to:**

- Identify and evaluate solutions to water problems related to source, storage, treatment and distribution, collection, treatment, and disposal
- Provide technical assistance and training to improve management, operation and maintenance of existing water and waste disposal facilities
- Prepare water and waste disposal loan and grant applications

conditions to determine threats to water resources

- Provide technical assistance or training to enhance the operation and maintenance of active landfills
- Provide technical assistance or training to help communities reduce the amount of solid waste coming into a landfill
- Provide technical assistance or training to prepare for closure and future use of a landfill site

**Save Time & Money!**

**JOLLY GOOD SAVINGS**

Advertise in this amount of space for only \$975\*. Reach over 750,000 Nebraska readers! Contact your local newspaper for more information or call 1-800-369-2850.

\*Statewide coverage for less than \$5.95 per publication. Regional ads also available in Central, Northeast, Southeast or Western Nebraska.

**Nebraska 2x2 Display Ad Network**  
[www.nebpress.com](http://www.nebpress.com)

**SOLID WASTE MANAGEMENT (SWM) grants** are available to most State and local entities and non-profit organizations with tax-exempt status, federally recognized tribes and academic institutions in rural areas with populations fewer than 10,000.

Applicants must have the proven ability, background, or experience, or have successfully completed a project similar to the one proposed.

Visit [http://www.rd.usda.gov/programs-services/solid-waste-management-grants\[5\]](http://www.rd.usda.gov/programs-services/solid-waste-management-grants[5]) for Solid Waste Management Grants and [http://www.rd.usda.gov/programs-services/water-waste-disposal-technical-assistance-training-grants\[6\]](http://www.rd.usda.gov/programs-services/water-waste-disposal-technical-assistance-training-grants[6]) for Technical Assistance and Training Grants for complete information, including the FY 2017 Application Guide, for each program.

Wishing you **PEACE & JOY** This Holiday Season



**Our gift to you!**

**QSI** \$18,400\* Fully Loaded 24x32x10

Quality Structures, Inc.  
Serving: Kansas, Missouri, Nebraska & Iowa

PRICE INCLUDES: \*Travel charges may apply. Exterior concrete not included.  
Installation • WeatherWrap Insulation • (2) 9x8 Insulated OH Doors  
(1) 9-Lite Entry Door • (2) 3x3 Insulated Windows • 4" Wainscoting  
12" Vented Overhang • 4" Concrete Floor

[www.qualitystructures.com](http://www.qualitystructures.com) • 800-374-6988

The Solid Waste Management Grant Program helps reduce or eliminate pollution of water resources through funding for organizations that provide technical assistance or training to improve the planning and management of solid waste sites in rural areas.

Contact Mary Sneckenberg at USDA Rural Development, (402) 437-5567 for additional program information.

For more information, contact the Rural Development office nearest you.

You can locate an office by visiting: <http://www.rd.usda.gov/programs-services/water-waste-disposal-loan-grant-program/ne>

**MOLEX**  
**A World of Opportunities!**

Growth - Innovation - Adding Value to Society

Molex, a world leading manufacturer of electronic connector solutions (solutions used every day in cell phones, automobiles, appliances and more) has a need for exceptional personnel in our Lincoln, Nebraska facilities. Molex is a progressive company with exceptional state-of-the-art facilities. Molex provides many opportunities for growth and advancement leading to a great long-term career.

**Come Grow with Us!**

**Maintenance - Electro/Mechanical (\$19.15 - \$31.95)**  
**Tool & Die Maker (\$19.15 - \$36.07)**

Check us out and apply at [www.Molex.com](http://www.Molex.com); Select Careers; Find Your Role; Select Americas and then Search Lincoln, NE and click Search. Affirmative Action, Equal Opportunity Employer, Minority/Female/Disabled/Veteran; Substance Screen, except where prohibited by state law; E-Verify.

Human Resources c/o mw  
700 Kingbird Road  
Lincoln, NE 68521

**Solid Waste Management Grants are used to:**

- Evaluate current landfill

## Four new scholarships of \$10,000 to be awarded to students by Cabela's Female high school students in Nebraska are eligible for scholarships, mentoring

**SIDNEY-** Cabela's, the World's Foremost Outfitter® of hunting, fishing and outdoor gear, together with the Harry and Reba Huge Foundation, will be awarding \$10,000 scholarships to four female graduates of Nebraska high schools this spring.

Not only will the students receive \$10,000 — \$2,500 a year for four years — they also will have opportunities to receive mentoring from women in leadership positions at Cabela's and possible internships with the company.

Cabela's Women in Leadership scholarships are part of an initiative by Cabela's leaders to encourage young women to become tomorrow's leaders.

This is the fifth year Cabela's has partnered with the Harry and Reba Huge Foundation to issue these scholarships, which will be awarded to women who graduate in the spring of 2017 and plan to attend college in the fall of 2017.

Scholarship winners may attend any college or university.

"We are pleased to continue the Cabela's Women in Leadership scholarship program," said Sarah Kaiser, director at Cabela's. "Our partnership with the Huge Foundation has been a truly collaborative effort toward the common goal of enhancing the future of talented, deserving young women."

Applications will be due Feb. 6 and are available beginning Dec. 1 through the Scholarship-quest website ([www.education-quest.org](http://www.education-quest.org)). Harry and Reba Huge Foundation website ([www.thehugefoundation.org](http://www.thehugefoundation.org)) or from high school counselors.

"These are extraordinary scholarships," said Jack Siemsen, president and CEO of the Harry and Reba Huge Foundation. "They not only provide substantial financial support to these very deserving young women, but they also open doors to special leadership opportunities within the Cabela's organization. This includes the chance to be mentored by professionals at Cabela's as well having access to special Huge Foundation educational, cultural and career networking activities."

**U Save Pharmacy**

216 E. 7th Street, Wayne, NE  
402-375-2922

**FLU SHOTS**



Flu Shots Available  
Tuesday through Saturday





To place your ad call: Jan at 402-375-2600 or 1-800-672-3418 • Fax: 402-375-1888

**DEADLINES:** Line Ads Tuesdays at Noon • Display Ads Monday 5:00 p.m.

# CLASSIFIEDS

**Rate Schedule: 25 WORDS OR LESS - 1 WEEK \$14 - 2 WEEKS \$24 • This is a Combination Rate with The Morning Shopper**

Ads must be prepaid unless you have pre-approved credit. Cash, personal checks, money orders, VISA, or MasterCard are welcome.

Call: 402-375-2600, Fax: 402-375-1888, or Visit Our Office: 114 Main Street, Wayne, NE.

POLICIES — •We ask that you check your ad after its first insertion for mistakes. The Wayne Herald is not responsible for more than ONE incorrect insertion or omission on any ad ordered for more than one insertion.

•Requests for corrections should be made within 24 hours of the first publication. •The publisher reserves the right to edit, reject or properly classify any copy.

**HELP WANTED**

## HELP WANTED CNA

Apply in person at:

**WAKEFIELD HEALTH CARE CENTER**  
306 Ash Street • Wakefield, NE 68784  
Phone: 402-287-2244 EOE

### Earn Up to \$50,000 plus\* 1st Year! Driver/Field Service Technician Wanted

CDL preferred but not required

Heritage Industries has a need for a self-motivated mature individual to deliver, install and do minor field repairs for Drive-Up ATM buildings throughout the country.

- \* Compensation commensurate with experience.
- \* Daily Meal Allowance (\$9 per meal non taxable).
- \* Will be home most weekends.
- \* Will run empty coming home.
- \* Company paid Hotels.
- \* CDL preferred but not required.

Heritage offers a comprehensive benefit package that includes vacation, health insurance and 401(k) plan. EOE. Send resume or apply at:  
Heritage Industries,  
Attention: Transportation Manager,  
P. O. Box 37, 905 Centennial Rd., Wayne, NE 68787

### Paraeducator (Teacher's Aide)

This position is subject to a veterans preference.

Currently looking to fill opening at Tower School in Wayne.  
(M-F 8:00-3:00 school year and limited summer school)  
Provide assistance with activities of daily living, attend to individual care needs, and participate in student-focused education activities.  
We offer competitive wages and an excellent benefit package. CNA's strongly considered.

Submit an application by visiting: [www.esu1.org](http://www.esu1.org)  
Send letter of interest and resume to:  
Personnel — ESU#1  
211 Tenth Street, Wakefield, NE 68784-5014  
402-287-2061

### Employment Opportunities

WSC is accepting applications for the following positions. WSC offers a competitive salary and an excellent benefits package including health insurance, retirement, tuition assistance (employee/family), paid leave time, and paid holidays.

#### CUSTODIAN 10:30 p.m.-7:00 a.m. Sunday-Thursday

For a complete listing of job requirements and application procedures, visit our Website at [www.wsc.edu/hr](http://www.wsc.edu/hr), call 402-375-7034 or email [hr@wsc.edu](mailto:hr@wsc.edu). WSC is an EOE.

### CARHART LUMBER COMPANY YARD FOREMAN

Carhart Lumber Company in Wayne is looking for a responsible, hardworking individual to take over the duties of yard foreman. Must have a valid driver's license. Responsibilities include: management of other yard employees, delivery of materials to and from the jobsite, inventory control and receiving, managing the daily delivery schedule and cleaning and maintaining equipment and the yard. Benefits include: hourly wage based on experience, insurance and vacation benefits, 401k and the opportunity to work for an established company. Apply in person at Carhart Lumber Company at 105 Main Street, downtown Wayne. Carhart Lumber Company is an equal opportunity employer.



105 Main Street  
Wayne, NE. 68787  
Phone 402-375-2110

### Wayne Community Schools

is seeking a qualified candidate to fill the role of **Preschool teacher for the 2017-18 school year**

Wayne Community Schools offers a 3 and 4 year old full day preschool program. A background in TS Gold, ECERS-3, and Early Learning Guidelines is preferred but not required. The successful candidate must hold a valid State of Nebraska teaching certificate in the area of Early Childhood, Early Childhood Special Education, or Early Childhood Inclusive.

Extra duty positions are available.

Go to [www.wayneschools.org](http://www.wayneschools.org) and choose the district tab, then the employment tab to complete the job application process - or go to [wayne.humanexventures.com](http://wayne.humanexventures.com) to apply. Applications will be accepted until position is filled.

Please contact Misty Bear at 402.833.1450 with questions.

Wayne Community Schools is an Equal Opportunity and Veteran's Preference Employer.

### LIBERTY CENTRE SERVICES (LCS)

"Assisting adults recovering from mental illness with real opportunities to rebuild their lives" is what we're all about! LCS is an international, dually accredited organization.

### COMMUNITY SUPPORT CASE MANAGER

This position delivers community based mental health services to adults recovering from mental illness and substance abuse in a community-based setting.

**Required Qualifications Include:**

A Bachelor's degree in human services or related field preferred; two years coursework in the human services field and two years of experience in the behavioral health field will be considered. All LCS positions require a valid driver's license with a good driving record. Competitive salary and benefits package.

**Completed application and resume required.**  
Application review begins immediately. Open until filled.

Liberty Centre Services  
Attention: Lisa Dike  
[ldike@cablone.net](mailto:ldike@cablone.net)

900 East Norfolk Avenue  
Norfolk, NE 68701  
An Equal Opportunity Employer

402-370-3503  
<http://www.libertycentre.org/>



**WE'RE HIRING!**  
**Wakefield, NE  
Post Office**

**Part-Time  
Flexible Clerk**  
Starting at: \$19.62/hour  
With Career Benefits Package

**Apply NOW at  
[www.USPS.com/Careers](http://www.USPS.com/Careers)**  
From first class to challenging careers, we DELIVER it all.

Questions, contact:  
Christine Lillard (402) 287-2021  
[Centralplainsjobs@USPS.gov](mailto:Centralplainsjobs@USPS.gov)



Great Dane

### Employment Opportunities

Great Dane Trailers of Wayne is accepting applications to fill the following positions

**Inventory Planner:** Duties Include: Planning of assigned materials to ensure an uninterrupted flow of material to support the production schedule; verify inventory balance through physically counting material within the plant. General knowledge of the raw material required to build the Super Seal trailer would be helpful. Must have a working knowledge of bill of materials and sales orders. Maintain inventory records and data base information. Multitasking and paying close attention to detail. Must have strong PC skills (Microsoft Word, Excel, Office, etc.

Great Dane has one of the best wage and benefits packages in Northeast Nebraska including Medical, Dental, and Vision Insurance, as well as 401K and a pension plan. Candidates are to successfully complete a post job offer drug screen and medical examination. Individuals wanting to join a winning team need to apply in person or mail in your resume at

**1200 N. Centennial Road • Wayne, NE 68787**  
POBox 157

A Division of Great Dane Limited Partnership EOE  
ISO 9007:2005 Registered Plant

## Providence Medical Center

has the following openings available:

### Medical Lab Scientist MLS/MLT (ASCP)

(full time - benefit eligible)

### Home Health Care/Hospice RN

(full time - benefit eligible)

### Registered Nurse - Med/Surg

(part time 24 hours - benefit eligible)

### Registered Nurse - Med/Surg

(part time - PRN)

### Periop RN

(32 hours - benefit eligible)

### Ward Clerk

(full time - benefit eligible)

### CNA

(full time - benefit eligible)

### Patient Access Specialist

(full time - benefit eligible)

If interested, please inquire or submit resume to:

**Jackie Backer, VP of Human Resources**  
**1200 Providence Road, Wayne, NE 68787**  
Or FAX/email resume to  
**402-375-7604 or [jabacker@providencemedical.com](mailto:jabacker@providencemedical.com)**  
Apply Online at [www.providencemedical.com](http://www.providencemedical.com)

One of the Nation's Top 100  
Critical Access Hospitals



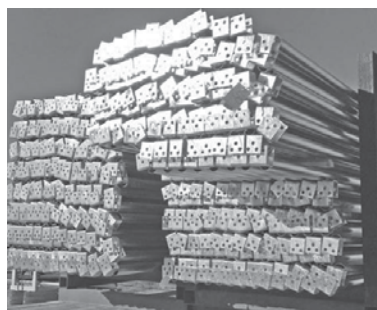
EEO/AA/VETS/DISABILITY

### Industrial Maintenance Technician

Our team needs you if you are a self-starter with a proven track record of dependability, dedication, hard work and like working with other people.

Experience preferred in project management, electrical, and fabrication.

If you are serious about joining our team apply on line at [www.valmontcareers.com](http://www.valmontcareers.com)



All qualified applicants will receive consideration for employment without regard to race, color, religion, sex, national origin, disability or protected veteran status.



**valmont**  
WEST POINT GALVANIZING

# CLASSIFIEDS

## HELP WANTED

**FOR RENT**

**SUNNYHILL VILLA APARTMENTS**  
 900 Sunnyview Drive • Wayne  
 ALL AGES 18+ & OVER NOW WELCOME!  
 1 BEDROOM APARTMENTS AVAILABLE  
 for Immediate Occupancy  
 SECURITY DEPOSITS ONLY \$250  
 Rent Based on Income.  
 Rental Assistance Available for those who qualify!


Call Mary for details  
 402-375-5013  
 TDD 1-800-833-7352  
 Managed by R.W. Investments, Inc.

\*This institution is an Equal Opportunity Provider & Employer\*

The Emerson-Hubbard Schools has the following opening at the present time:

**Route Bus Driver**

Emerson-Hubbard Community Schools is seeking applications for a full time Route Bus Driver. This position will be for A.M. and P.M. routes taking approximately one and one-half hours per route. For an application and more information, please call 402-695-2621 or come to the Superintendent's office at 109 West 3rd Street, Emerson, NE 68733.

**Now Hiring**  **Come Join Our Team!**

**CNA** FT or PT Evening or Night Shift

**MED-AIDE** Evening

Apply online: [WisnerCareCenter.com](http://WisnerCareCenter.com) or in person at: Wisner Care Center • 1105 9th St, Wisner, NE 68791  
 Phone 402-529-3286

**— HELP WANTED —**

**CNA / CMA**

• full time evening shift & night shift  
 • part time day shift

**HILLCREST CARE CENTER & ASSISTED LIVING**  
 702 Cedar Ave. • Laurel, NE • 402-256-3961

**R Way's is seeking individuals to work at Kirkwood House for evening and overnight hours**

Ideal candidates would be self-starters with a positive attitude. A bachelor's degree in Human Service Counseling, or a related field, is preferred, but will train the right people. Medication Aides are encouraged to apply! Flexible hours, paid training for MA 40-hour class, and the opportunity to make a difference! Come and join R family! Please contact Charley at 402-833-8163 with any questions, or email your resume to [cbonanno@r-way.org](mailto:cbonanno@r-way.org)

 **Legacy Garden**  
 REHABILITATION AND LIVING CENTER  
 Our Family Taking Care of Yours!

**CURRENT JOB OPENINGS**

- **CNA and CMA** (All Shifts Available)  
NEW STARTING WAGE and LEADERSHIP with the opportunity for self-scheduling!
- **Dietary Cook** (Part-Time; exp preferred)
- **Registered Nurse** (Part-Time)
- **Delivery Driver** (Part-Time for The Apothecary Shop)
- **Activities Director** (Full-Time)

**APPLY ONLINE** [www.pendercommunityhospital.com](http://www.pendercommunityhospital.com)

This institution is an EEO/AA Employer and Provider, Protected Veterans and Individuals with Disabilities.

200 Valley View Drive • Pender, NE (402) 385-3072

 **Great Dane**

**BODY REPAIR PAINTER - 2nd Shift**

The successful candidate:

- Performs body repair and spray painting.
- May be required to do other duties as directed by the team leader or supervisor.
- Must show attention to quality.

**QUALIFICATIONS:**

- Ability to perform body repair and operate paint guns.
- Should have previous experience in auto body repair and / or painting. Vocational technical training in auto body is preferred.
- Applicants may be tested by actually performing a trailer body repair.

Great Dane has one of the best wage and benefits packages in Northeast Nebraska including Medical, Dental, and Vision Insurance, as well as 401K and a pension plan. Candidates are to successfully complete a post job offer drug screen and medical examination.

Interested individuals should submit resumes to [HABreitkreutz@GREATDANETRAILERS.COM](mailto:HABreitkreutz@GREATDANETRAILERS.COM) or mail to POB 157, Wayne, NE 68787 or apply at the Wayne Plant

**Great Dane Trailers**  
 1200 Centennial Road, Wayne, NE 68787  
 A Division of Great Dane Limited Partnership — EOE  
 ISO 9001:2008 Registered Plant

**• ACCEPTING APPLICATIONS •**

Join our team at **Cubby's in Wakefield**. Part-time positions - days, nights, weekends. Flexible around school schedules. Must be 19 years old for cashier, 16 years old for deli. Drug-free workplace. Drug screen, background checks. Apply in person, ask for the manager.

**CUBBY'S GODFATHER'S EXPRESS**  
 Hours - Deli: Mon-Sat. 5 am-Midnight, Sun. 6 am-Midnight  
 Store: Mon-Sat 5 a.m.-1 a.m. Sun. 6 a.m. - 1 a.m.

206 Oak Street  
 Wakefield, NE 68784

Also hiring for 11 p.m. - 7 a.m. Shift • Overnight Pay Rate



**•Dietary Manager**  
**•Nursing Assistants**

Mileage Reimbursement  
 Excellent Benefits Package - 2016 Health Insurance Premiums Reduced for Team Members

Located just minutes from:

- Wayne - 20 min.
- Wakefield - 10 min.
- Pender - 12 min.
- S. Sioux City, NE - 25 min.
- Sioux City, IA - 30 min
- Allen - 20 min.
- Ponca - 30 min.

APPLY TODAY ONLINE at: [www.Heritage-Emerson.com](http://www.Heritage-Emerson.com)  
 OR STOP BY 607 Nebraska Street • Emerson, NE 68733  
 Phone: (402) 695-2683

A Proud Member of the Vetter Health Services Family

 **Great Dane**

**PRODUCTION ENGINEERING DRAFTER**

Our Engineering Department is seeking an individual for drafting. **DESCRIPTION:** The successful candidate will create new, (or revise existing), assembly, weldment, and detail drawings for the manufacture of semi-trailers. This person will also process custom orders for manufacturing, with the supervision of a team leader and checker. All drafting is done on CATIA 3-D modeling.

**RESPONSIBILITIES:**

- Drafting of assembly, weldment, and detail drawings.
- To review sales orders assigned by team leader/checker and make a complete Bill of Materials with drawings that reflect the options selected on that order.
- To work on special projects relating to new trailer design changes.
- To resolve problems or questions regarding Bill of Materials and/or drawings as encountered by manufacturing.
- To keep current with changes in the trailer design.
- To work on projects assigned by supervisor, as necessary.

**EXPERIENCE:** Minimum Associates Degree or equivalent in Drafting required. Degree to be focused on mechanical/manufacturing methods for sheet metal and welding operation. Knowledge of Computer Aided Drafting and 3-D modeling is required. Candidates are to successfully complete a post job offer drug screen and medical examination

Interested individuals should submit resumes to [HABreitkreutz@GREATDANETRAILERS.COM](mailto:HABreitkreutz@GREATDANETRAILERS.COM) or mail to POB 157, Wayne, NE 68787 or apply at the Wayne Plant

**Great Dane Trailers**  
 1200 Centennial Road, Wayne, NE 68787  
 A Division of Great Dane Limited Partnership — EOE  
 ISO 9001:2008 Registered Plant

**FULL TIME/PART-TIME** farm/feedlot help wanted: Call 402-256-9353. Leave message or send resume/references to [peedyards@gmail.com](mailto:peedyards@gmail.com)

**HELP WANTED:** Apply in person at Vel's Bakery, 309 Main Street, Wayne, NE or call 375-2088.

☆☆☆☆ \$24 for two weeks worth of ads in the Shopper, Herald and on the internet site! Call Jan for details. 375-2600  
 ☆☆☆☆

**THANK YOU**

A big thank you to Bryan Knox for selling our family farm in Thurston County. He did a great job communicating and getting us a good price. We highly recommend him! His cell phone number is 402-305-4870

**Chuck Nielsen & Family**  
**Jean Anderson & Family**

**Thank You from the Family of Ed Carroll**

Our loved ones are a gift to us, their presence a blessing when they are on this earth. After they have gone, we mourn ... and then we celebrate the life they lived, the love they shared, the difference they made for having been in our lives.

Our hearts are full of gratitude when we say many thanks to the people that helped us celebrate his life; family members, friends and neighbors for all acts of kindness and sympathy; delicious food, drinks, beautiful flowers, donations, memorials, cards, gifts, visits, phone calls and kind words spoken to our family regarding the passing of a wonderful husband, father, grandfather and great grandfather.

We want to express special appreciation to Father Jeff for his many words of comfort and for being with us in the early hours at the house after his passing, and to Hasemann Funeral Home for their professional arrangements and caring service.

Our loved one will be missed forever, but we know that he will be in the hearts of all who shared our grief with us during this difficult time. He will always be remembered for his love of family, a warm smile and a twinkle in his eyes.

May God bless each and every one of you and remember to take the opportunity to make a memory, for a memory will last forever.

**NEW LOW RATE!** For \$5, you can advertise any item valued at \$50 or less for one week in the Wayne Herald, Morning Shopper and online. Call for details, 402-375-2600.

 **Wayne Runza**  
 GREAT reputation, QUALITY product and FUN staff!

**NOW HIRING**

Part-time OR Full-time, Day & Weekend Shifts

We work around your busy schedule!

Apply online at [www.runza.com/careers](http://www.runza.com/careers)

**MISCELLANEOUS**

\*\*\*

MAKE MONEY from stuff you don't want any more! Did you just read this ad? Then so did hundreds of other people! Snap ads are cheap and effective, call the Wayne Herald-Morning Shopper today @ 402-375-2600 and start making money from your old stuff today!

◆ ▼ ◆ ☆

Make your snap ad in the Morning Shopper or Herald really stand out, add a dingbat! Several to choose from. Call Jan at the Wayne Herald for all the details! 402-375-2600 or 1-800-672-3418.

✓ ✗ ✓ ▲

**READERS BEWARE!** Job opportunities being offered that require cash investment should be investigated before sending money. Contact the Better Business Bureau to learn if the company advertised is on file for any wrong doing. The Wayne Herald/Morning Shopper attempts to protect readers from false offerings, but due to the heavy volume we deal with, we are unable to screen all copy submitted.

**GIFT GIVING** and baking are easy with Tupperware. Contact Clara Osten, your local consultant for over 25 years. 402-518-8030 or 585-4323. Leave a message.

**ALL REAL** estate advertised herein is subject to the Federal Fair housing Act which makes it illegal to advertise "any preference, limitation, or discrimination because of race, color, religion, sex, handicap, familial status or national origin, or intention to make any such preference, limitation, or discrimination." State law also forbids discrimination based on these factors. We will not knowingly accept any advertising for real estate which is in violation of the law. All person are hereby informed that all dwellings advertised are available on an equal opportunity basis.

**WANTED**

**WANTED TO BUY:** Used Westendorf front end loader with brackets for an Alice Chalmers 185. Would consider other brands. Ph. 402-584-2633. Randall Carlson, Wakefield.

The family of Buford Prince thanks everyone for the cards, memorials, flowers, food and expressions of sympathy. Thank you to Hasemann Funeral Home, Rev. Judy and Methodist Ladies and special thank you to Aseracare Hospice and Plainview Manor for your care and thoughtfulness.

**Russ and Lorraine Prince & Family**  
**Chuck Prince**  
**Phyllis Prince**

I want to thank everyone that came to Johnathon's benefit! Also thank you to all the people who couldn't make it but have shown support in other ways. A HUGE THANK YOU to everyone who helped put it together!! It was so nice to see the Boy Scouts helping out and all the volunteers that set up, cooked food and donated time or items for the silent auction and the food that was served that day. It was so wonderful to see so many people show love and support! I feel very blessed, and words cannot express how much everything you all do means to my children and myself!

**Amanda Vick**

**LEISURE APARTMENTS**

•2 Bedroom Apartments Available with Rental Assistance for Qualified Applicants  
 •On-site Laundry  
 •Community Room for Activities

Please call:  
**PARK AVENUE MANAGEMENT**  
 at 1-800-762-7209  
 for an application  
 TDD# 1-800-833-7352

\*This institution is an Equal Opportunity Provider & Employer\*

**SPECIAL NOTICES**

**WINNERS OF Roy Reed Post 252** Winside, NE 52 gun raffle: Week 8, Brian Tomoson, Sgt. Bluff, IA; Week 9, Brady Frahm, Winside; Week 10, Dean Lieber, Jackson; Week 11, David Gravenholt, Norfolk.

